

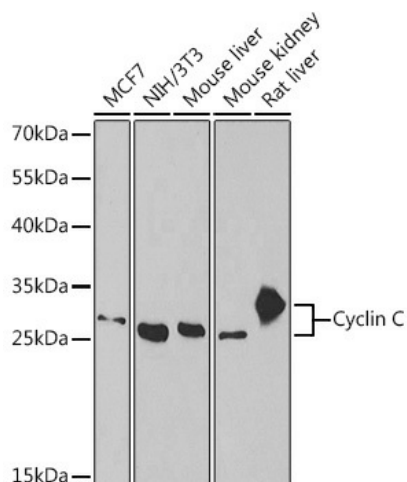
## Product datasheet for TA374371S

### Cyclin C (CCNC) Rabbit Polyclonal Antibody

#### Product data:

|                         |  |
|-------------------------|--|
| Product Type:           | Primary Antibodies   |
| Applications:           | ELISA, IHC, WB   |
| Recommended Dilution:   | WB, 1:500 - 1:2000<br>IHC-P, 1:50 - 1:200<br>ELISA, Recommended starting concentration is 1 µg/mL. Please optimize the concentration based on your specific assay requirements.  |
| Reactivity:             | Human, Mouse, Rat  |
| Modifications:          | Unmodified   |
| Host:                   | Rabbit   |
| Isotype:                | IgG  |
| Clonality:              | Polyclonal   |
| Formulation:            | Buffer: PBS with 0.02% sodium azide, 50% glycerol, pH 7.3.   |
| Concentration:          | lot specific   |
| Purification:           | Affinity purification  |
| Conjugation:            | Unconjugated   |
| Storage:                | Store at -20°C. Avoid freeze / thaw cycles.  |
| Stability:              | Shelf life: one year from despatch.  |
| Predicted Protein Size: | 33kDa  |
| Gene Name:              | cyclin C   |
| Database Link:          | <a href="#">Entrez Gene 892 Human P24863</a>   |
| Background:             | The protein encoded by this gene is a member of the cyclin family of proteins. The encoded protein interacts with cyclin-dependent kinase 8 and induces the phosphorylation of the carboxy-terminal domain of the large subunit of RNA polymerase II. The level of mRNAs for this gene peaks in the G1 phase of the cell cycle. Two transcript variants encoding different isoforms have been found for this gene. |
| Synonyms:               | CycC; hSRB11   |


[View online »](#)

**Product images:**


Western blot analysis of various lysates using Cyclin C Rabbit pAb (TA374371S) at 1:1000 dilution.

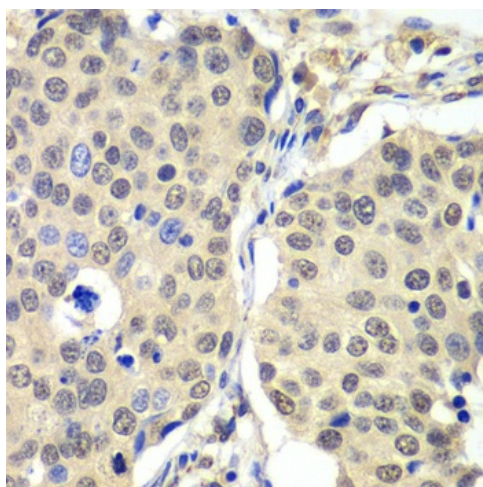
Secondary antibody: HRP-conjugated Goat anti-Rabbit IgG (H+L) (AS014) at 1:10000 dilution.

Lysates/proteins: 25µg per lane.

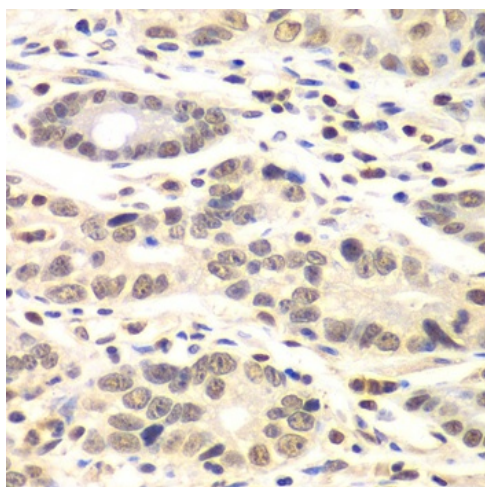
Blocking buffer: 3% nonfat dry milk in TBST.

Detection: ECL Basic Kit (RM00020).

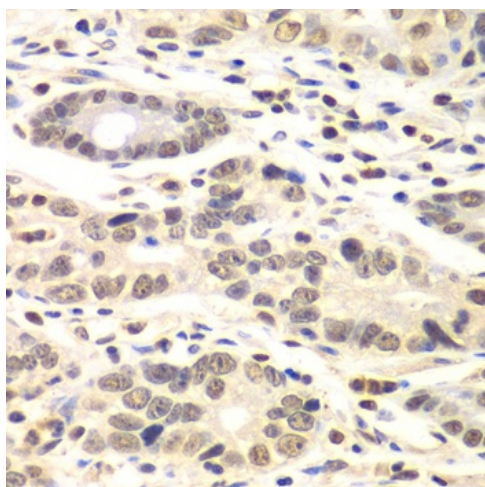
Exposure time: 60s.



Immunohistochemistry analysis of paraffin-embedded Rat brain using Cyclin C Rabbit pAb (TA374371S) at dilution of 1:100 (40x lens). Microwave antigen retrieval performed with 0.01M PBS Buffer (pH 7.2) prior to IHC staining.



Immunohistochemistry analysis of paraffin-embedded Human lung cancer using Cyclin C Rabbit pAb ([TA374371]) at dilution of 1:100 (40x lens). Microwave antigen retrieval performed with 0.01M PBS Buffer (pH 7.2) prior to IHC staining.



Immunohistochemistry analysis of paraffin-embedded Human colon carcinoma using Cyclin C Rabbit pAb ([TA374371]) at dilution of 1:100 (40x lens). Microwave antigen retrieval performed with 0.01M PBS Buffer (pH 7.2) prior to IHC staining.