

Product datasheet for **TA374367**

CCNB1IP1 Rabbit Polyclonal Antibody

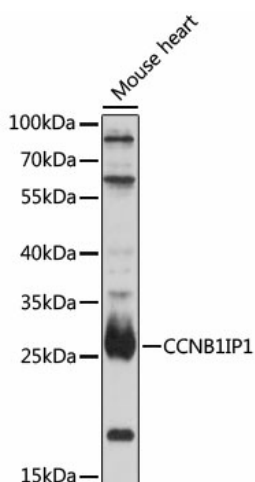
Product data:

Product Type:	Primary Antibodies
Applications:	WB
Recommended Dilution:	WB,1:500 - 1:2000
Reactivity:	Mouse
Host:	Rabbit
Isotype:	IgG
Clonality:	Polyclonal
Immunogen:	A synthetic peptide of human CCNB1IP1.
Formulation:	Buffer: PBS with 0.02% sodium azide,50% glycerol,pH7.3.
Concentration:	lot specific
Purification:	Affinity purification
Conjugation:	Unconjugated
Storage:	Store at -20°C. Avoid freeze / thaw cycles.
Stability:	Shelf life: one year from despatch.
Predicted Protein Size:	31kDa
Gene Name:	cyclin B1 interacting protein 1
Database Link:	Q9NPC3
Background:	HEI10 is a member of the E3 ubiquitin ligase family and functions in progression of the cell cycle through G(2)/M.
Synonyms:	C14orf18; HEI10; OTTHUMP00000163984; OTTHUMP00000163986



[View online »](#)

Product images:



Western blot analysis of extracts of mouse heart, using CCNB1IP1 antibody (TA374367) at 1:1000 dilution. | Secondary antibody: HRP Goat Anti-Rabbit IgG (H+L) at 1:10000 dilution. | Lysates/proteins: 25ug per lane. | Blocking buffer: 3% nonfat dry milk in TBST. | Detection: ECL Enhanced Kit . | Exposure time: 90s.