

## Product datasheet for **TA374359**

### LD78 beta (CCL3L1) Rabbit Polyclonal Antibody

#### Product data:

Product Type:	Primary Antibodies
Applications:	WB
Recommended Dilution:	WB,1:500 - 1:2000
Reactivity:	Human
Modifications:	Unmodified
Host:	Rabbit
Isotype:	IgG
Clonality:	Polyclonal
Immunogen:	Recombinant fusion protein containing a sequence corresponding to amino acids 24-93 of human CCL3L1 (NP_066286.1).
Formulation:	Buffer: PBS with 0.02% sodium azide,50% glycerol,pH7.3.
Concentration:	lot specific
Purification:	Affinity purification
Conjugation:	Unconjugated
Storage:	Store at -20°C. Avoid freeze / thaw cycles.
Stability:	Shelf life: one year from despatch.
Predicted Protein Size:	10kDa
Gene Name:	C-C motif chemokine ligand 3 like 1
Database Link:	<a href="#">Entrez Gene 6349 Human P16619</a>



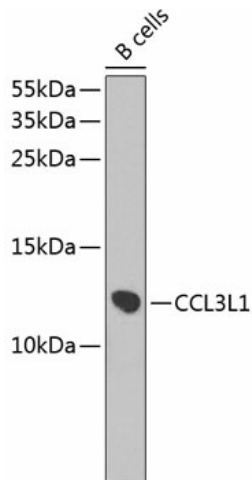
[View online »](#)

**Background:**

This gene is one of several cytokine genes that are clustered on the q-arm of chromosome 17. Cytokines are a family of secreted proteins that function in inflammatory and immunoregulatory processes. The protein encoded by this gene binds to several chemokine receptors, including chemokine binding protein 2 and chemokine (C-C motif) receptor 5 (CCR5). CCR5 is a co-receptor for HIV, and binding of this protein to CCR5 inhibits HIV entry. The copy number of this gene varies among individuals, where most individuals have one to six copies, and a minority of individuals have zero or more than six copies. There are conflicting reports about copy number variation of this gene and its correlation to disease susceptibility. This record represents one of two copies that are present on the ALT\_REF\_LOCI\_2 alternate haplotype of the GRCh38 human reference genome assembly. Alternative splicing of this gene results in multiple transcript variants.

**Synonyms:**

464.2; D17S1718; G0S19-2; LD78; LD78-beta(1-70); LD78BETA; MGC12815; MGC104178; MGC182017; MIP1AP; SCYA3L; SCYA3L1

**Product images:**

Western blot analysis of extracts of B-cell cells, using CCL3L1 antibody (TA374359) at 1:1000 dilution. | Secondary antibody: HRP Goat Anti-Rabbit IgG (H+L) at 1:10000 dilution. | Lysates/proteins: 25ug per lane. | Blocking buffer: 3% nonfat dry milk in TBST. | Detection: ECL Enhanced Kit. | Exposure time: 60s.