

Product datasheet for **TA374358S**

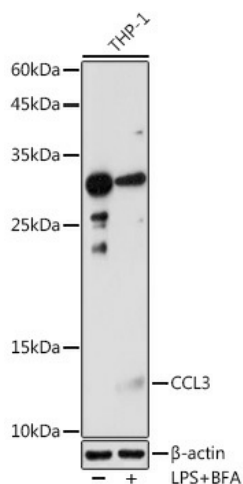
CCL3 Rabbit Polyclonal Antibody

Product data:

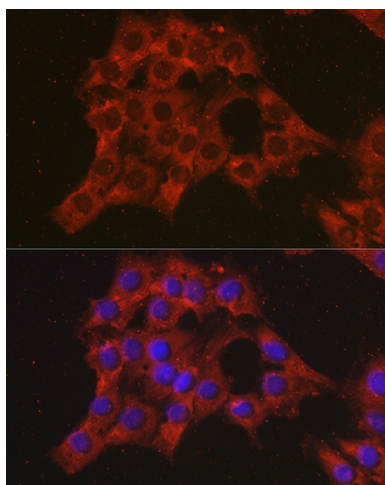
Product Type:	Primary Antibodies
Applications:	ICC/IF, WB
Recommended Dilution:	WB,1:500 - 1:2000 IF,1:50 - 1:200
Reactivity:	Human, Mouse, Rat
Modifications:	Unmodified
Host:	Rabbit
Isotype:	IgG
Clonality:	Polyclonal
Immunogen:	Recombinant fusion protein containing a sequence corresponding to amino acids 24-92 of human CCL3 (NP_002974.1).
Formulation:	Buffer: PBS with 0.02% sodium azide,50% glycerol,pH7.3.
Concentration:	lot specific
Purification:	Affinity purification
Conjugation:	Unconjugated
Storage:	Store at -20°C. Avoid freeze / thaw cycles.
Stability:	Shelf life: one year from despatch.
Predicted Protein Size:	10kDa
Gene Name:	C-C motif chemokine ligand 3
Database Link:	Entrez Gene 6348 Human P10147
Background:	This locus represents a small inducible cytokine. The encoded protein, also known as macrophage inflammatory protein 1 alpha, plays a role in inflammatory responses through binding to the receptors CCR1, CCR4 and CCR5. Polymorphisms at this locus may be associated with both resistance and susceptibility to infection by human immunodeficiency virus type 1.
Synonyms:	G0S19-1; LD78ALPHA; MIP-1-alpha; MIP1A; SCYA3; SIS-beta



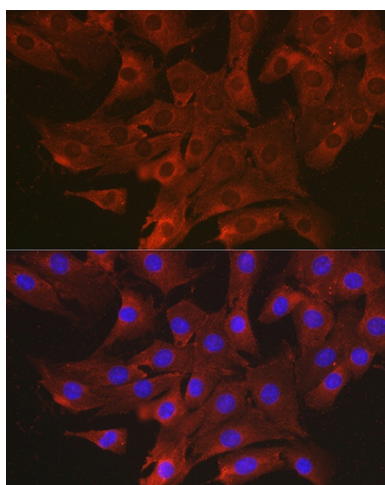
[View online »](#)

Product images:

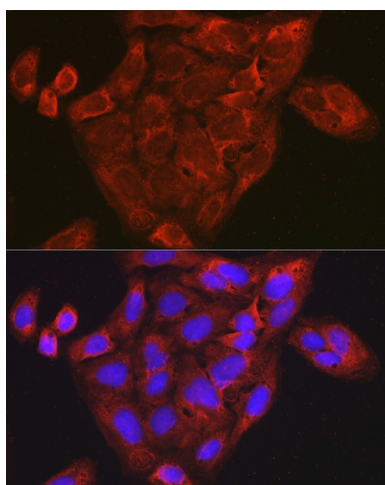
Western blot analysis of extracts of THP-1 cells, using CCL3 antibody ([TA374358]) at 1:1000 dilution. THP-1 cells were treated by LPS for 6 hours and Brefeldin A for 3 hours of stimulation. | Secondary antibody: HRP Goat Anti-Rabbit IgG (H+L) at 1:10000 dilution. | Lysates/proteins: 25 μ g per lane. | Blocking buffer: 3% nonfat dry milk in TBST. | Detection: ECL Enhanced Kit. | Exposure time: 180s.



Immunofluorescence analysis of C6 cells using CCL3 Rabbit pAb ([TA374358]) at dilution of 1:100 (40x lens). Blue: DAPI for nuclear staining.



Immunofluorescence analysis of NIH-3T3 cells using CCL3 Rabbit pAb ([TA374358]) at dilution of 1:100 (40x lens). Blue: DAPI for nuclear staining.



Immunofluorescence analysis of U-2 OS cells using CCL3 Rabbit pAb ([TA374358]) at dilution of 1:100 (40x lens). Blue: DAPI for nuclear staining.