

Product datasheet for **TA374344S**

CCDC61 Rabbit Polyclonal Antibody

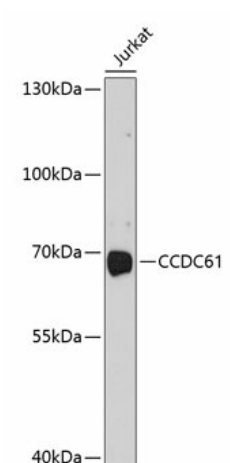
Product data:

Product Type:	Primary Antibodies
Applications:	ELISA, WB
Recommended Dilution:	WB, 1:500 - 1:2000 ELISA, Recommended starting concentration is 1 µg/mL. Please optimize the concentration based on your specific assay requirements.
Reactivity:	Human
Modifications:	Unmodified
Host:	Rabbit
Isotype:	IgG
Clonality:	Polyclonal
Formulation:	Buffer: PBS with 0.02% sodium azide, 50% glycerol, pH 7.3.
Concentration:	lot specific
Purification:	Affinity purification
Conjugation:	Unconjugated
Storage:	Store at -20°C. Avoid freeze / thaw cycles.
Stability:	Shelf life: one year from despatch.
Predicted Protein Size:	57kDa
Gene Name:	coiled-coil domain containing 61
Database Link:	Entrez Gene 729440 Human Q9Y6R9
Background:	Enables identical protein binding activity and microtubule binding activity. Involved in centriole assembly and mitotic spindle assembly. Located in centriolar satellite and ciliary basal body. Part of centriolar subdistal appendage.
Synonyms:	Ccdc61



[View online »](#)

Product images:



Western blot analysis of lysates from Jurkat cells