

## Product datasheet for **TA374344**

### CCDC61 Rabbit Polyclonal Antibody

#### Product data:

Product Type:	Primary Antibodies
Applications:	WB
Recommended Dilution:	WB,1:500 - 1:2000
Reactivity:	Human
Modifications:	Unmodified
Host:	Rabbit
Isotype:	IgG
Clonality:	Polyclonal
Immunogen:	Recombinant fusion protein containing a sequence corresponding to amino acids 352-531 of human CCDC61 (NP_001073871.1).
Formulation:	Buffer: PBS with 0.02% sodium azide,50% glycerol,pH7.3.
Concentration:	lot specific
Purification:	Affinity purification
Conjugation:	Unconjugated
Storage:	Store at -20°C. Avoid freeze / thaw cycles.
Stability:	Shelf life: one year from despatch.
Predicted Protein Size:	37kDa/57kDa
Gene Name:	coiled-coil domain containing 61
Database Link:	<a href="#">Entrez Gene 729440 Human Q9Y6R9</a>

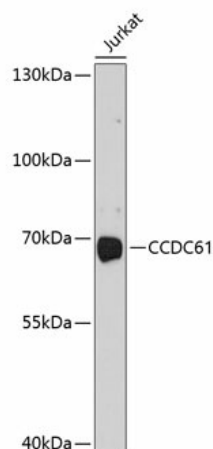
**Background:** Microtubule-binding centrosomal protein required for centriole cohesion, independently of the centrosome-associated protein/CEP250 and rootletin/CROCC linker. In interphase, required for anchoring microtubule at the mother centriole subdistal appendages and for centrosome positioning. During mitosis, may be involved in spindle assembly and chromatin alignment by regulating the organization of spindle microtubules into a symmetrical structure. Has been proposed to play a role in CEP170 recruitment to centrosomes. However, this function could not be confirmed. Plays a non-essential role in ciliogenesis.



[View online »](#)

Synonyms: Ccdc61

### Product images:



Western blot analysis of extracts of Jurkat cells, using CCDC61 antibody (TA374344) at 1:1000 dilution. | Secondary antibody: HRP Goat Anti-Rabbit IgG (H+L) at 1:10000 dilution. | Lysates/proteins: 25ug per lane. | Blocking buffer: 3% nonfat dry milk in TBST. | Detection: ECL Basic Kit . | Exposure time: 90s.