

Product datasheet for TA374329S

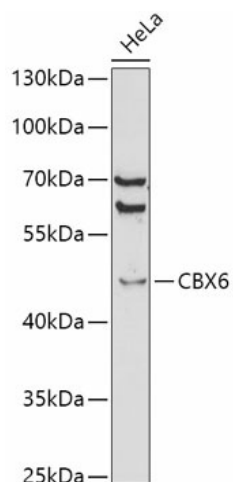
CBX6 Rabbit Polyclonal Antibody

Product data:

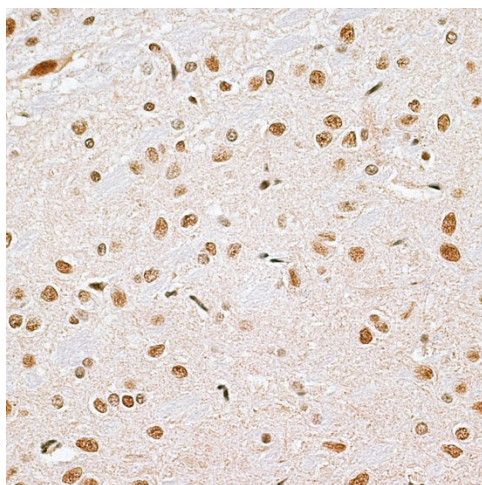
Product Type:	Primary Antibodies
Applications:	ELISA, IHC, WB
Recommended Dilution:	WB, 1:500 - 1:2000 IHC-P, 1:50 - 1:200 ELISA, Recommended starting concentration is 1 µg/mL. Please optimize the concentration based on your specific assay requirements.
Reactivity:	Human, Mouse, Rat
Modifications:	Unmodified
Host:	Rabbit
Isotype:	IgG
Clonality:	Polyclonal
Formulation:	Buffer: PBS with 0.02% sodium azide, 50% glycerol, pH 7.3.
Concentration:	lot specific
Purification:	Affinity purification
Conjugation:	Unconjugated
Storage:	Store at -20°C. Avoid freeze / thaw cycles.
Stability:	Shelf life: one year from despatch.
Predicted Protein Size:	44kDa
Gene Name:	chromobox 6
Database Link:	Entrez Gene 23466 Human O95503
Background:	Predicted to enable single-stranded RNA binding activity. Involved in negative regulation of transcription by RNA polymerase II. Located in nucleus. Part of PcG protein complex. Biomarker of glioblastoma.
Synonyms:	CBX6


[View online »](#)

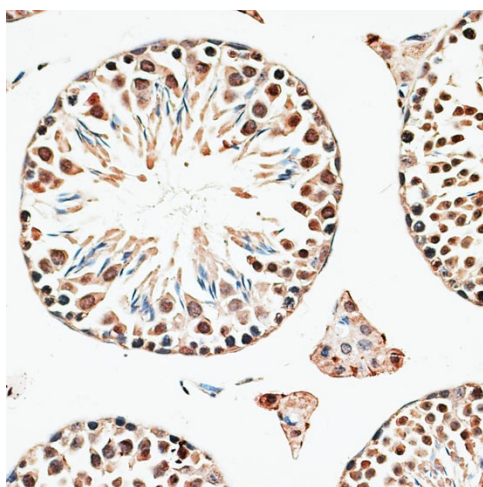
Product images:



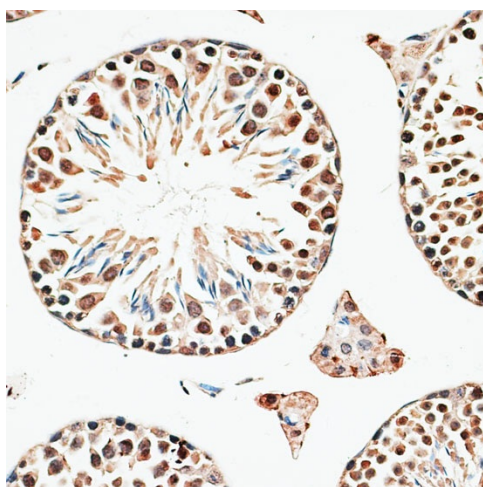
Western blot analysis of lysates from HeLa cells



Immunohistochemistry analysis of paraffin-embedded Rat liver using CBX6 Rabbit pAb ([TA374329]) at dilution of 1:100 (40x lens). Microwave antigen retrieval performed with 0.01M PBS Buffer (pH 7.2) prior to IHC staining.



Immunohistochemistry analysis of paraffin-embedded Rat brain using CBX6 Rabbit pAb ([TA374329]) at dilution of 1:100 (40x lens). Microwave antigen retrieval performed with 0.01M PBS Buffer (pH 7.2) prior to IHC staining.



Immunohistochemistry analysis of paraffin-embedded Mouse testis using CBX6 Rabbit pAb ([TA374329]) at dilution of 1:100 (40x lens). Microwave antigen retrieval performed with 0.01M PBS Buffer (pH 7.2) prior to IHC staining.