

## Product datasheet for **TA374327**

### HP1 alpha (CBX5) Rabbit Polyclonal Antibody

#### Product data:

Product Type:	Primary Antibodies
Applications:	ICC/IF, WB
Recommended Dilution:	WB,1:500 - 1:2000 IF,1:50 - 1:200
Reactivity:	Human, Mouse
Modifications:	Unmodified
Host:	Rabbit
Isotype:	IgG
Clonality:	Polyclonal
Immunogen:	Recombinant fusion protein containing a sequence corresponding to amino acids 1-100 of human HP1 alpha/HP1 alpha/CBX5 (NP_001120794.1).
Formulation:	Buffer: PBS with 0.02% sodium azide,50% glycerol,pH7.3.
Concentration:	lot specific
Purification:	Affinity purification
Conjugation:	Unconjugated
Storage:	Store at -20°C. Avoid freeze / thaw cycles.
Stability:	Shelf life: one year from despatch.
Predicted Protein Size:	22kDa
Gene Name:	chromobox 5
Database Link:	<a href="#">Entrez Gene 23468 Human P45973</a>



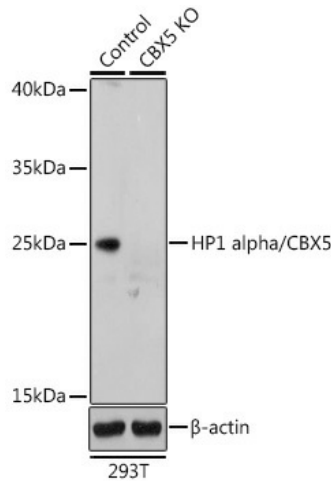
[View online »](#)

**Background:**

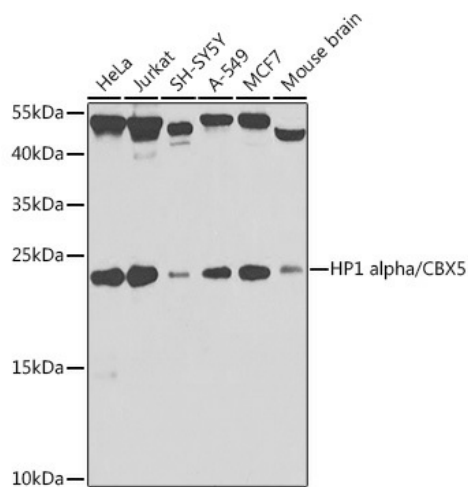
This gene encodes a highly conserved nonhistone protein, which is a member of the heterochromatin protein family. The protein is enriched in the heterochromatin and associated with centromeres. The protein has a single N-terminal chromodomain which can bind to histone proteins via methylated lysine residues, and a C-terminal chromo shadow-domain (CSD) which is responsible for the homodimerization and interaction with a number of chromatin-associated nonhistone proteins. The encoded product is involved in the formation of functional kinetochore through interaction with essential kinetochore proteins. The gene has a pseudogene located on chromosome 3. Multiple alternatively spliced variants, encoding the same protein, have been identified.

**Synonyms:**

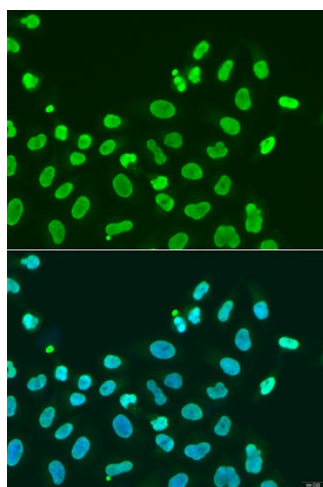
HP1; HP1-ALPHA; HP1A; HP1Hs-alpha

**Product images:**


Western blot analysis of extracts from normal (control) and HP1 alpha/HP1 alpha/CBX5 Rabbit pAb knockout (KO) 293T cells, using HP1 alpha/HP1 alpha/CBX5 Rabbit pAb antibody (TA374327) at 1:1000 dilution. |Secondary antibody: HRP Goat Anti-Rabbit IgG (H+L) at 1:10000 dilution. |Lysates/proteins: 25ug per lane. |Blocking buffer: 3% nonfat dry milk in TBST. |Detection: ECL Basic Kit . |Exposure time: 1s.



Western blot analysis of extracts of various cell lines, using HP1 alpha/HP1 alpha/CBX5 antibody (TA374327) at 1:1000 dilution. |Secondary antibody: HRP Goat Anti-Rabbit IgG (H+L) at 1:10000 dilution. |Lysates/proteins: 25ug per lane. |Blocking buffer: 3% nonfat dry milk in TBST. |Detection: ECL Basic Kit . |Exposure time: 30s.



Immunofluorescence analysis of U2OS cells using HP1 alpha/HP1 alpha/CBX5 antibody (TA374327) at dilution of 1:100. Blue: DAPI for nuclear staining.