

Product datasheet for **TA374324S**

HP1 gamma (CBX3) Rabbit Polyclonal Antibody

Product data:

Product Type:	Primary Antibodies
Applications:	ICC/IF, IHC, IP, WB
Recommended Dilution:	WB,1:500 - 1:2000 IHC,1:50 - 1:200 IF,1:50 - 1:200 IP,1:50 - 1:200
Reactivity:	Human, Mouse, Rat
Modifications:	Unmodified
Host:	Rabbit
Isotype:	IgG
Clonality:	Polyclonal
Immunogen:	Recombinant fusion protein containing a sequence corresponding to amino acids 1-183 of human HP1 gamma/HP1 gamma/CBX3 (NP_009207.2).
Formulation:	Buffer: PBS with 0.02% sodium azide,50% glycerol,pH7.3.
Concentration:	lot specific
Purification:	Affinity purification
Conjugation:	Unconjugated
Storage:	Store at -20°C. Avoid freeze / thaw cycles.
Stability:	Shelf life: one year from despatch.
Predicted Protein Size:	20kDa
Gene Name:	chromobox 3
Database Link:	Entrez Gene 11335 Human Q13185



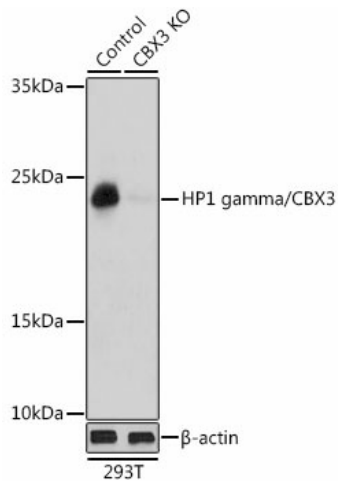
[View online »](#)

Background:

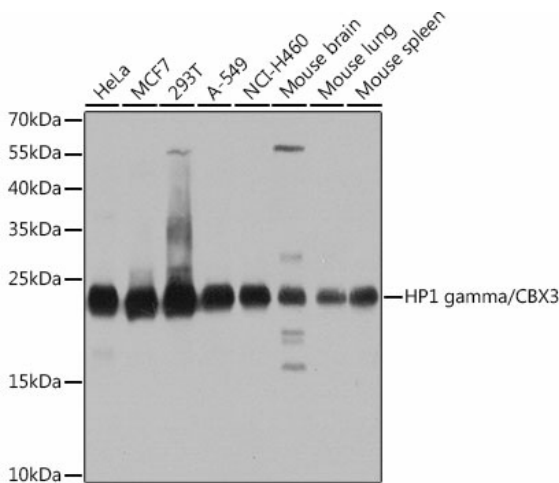
At the nuclear envelope, the nuclear lamina and heterochromatin are adjacent to the inner nuclear membrane. The protein encoded by this gene binds DNA and is a component of heterochromatin. This protein also can bind lamin B receptor, an integral membrane protein found in the inner nuclear membrane. The dual binding functions of the encoded protein may explain the association of heterochromatin with the inner nuclear membrane. This protein binds histone H3 tails methylated at Lys-9 sites. This protein is also recruited to sites of ultraviolet-induced DNA damage and double-strand breaks. Two transcript variants encoding the same protein but differing in the 5' UTR, have been found for this gene.

Synonyms:

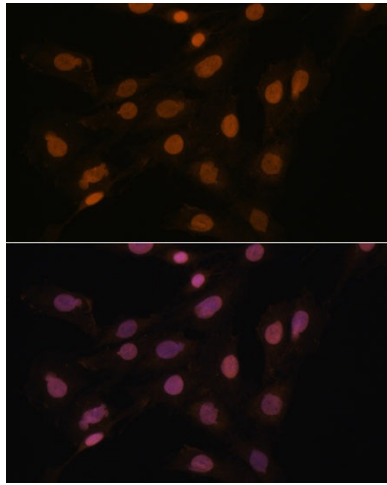
HECH; HP1-GAMMA; HP1Hs-gamma

Product images:


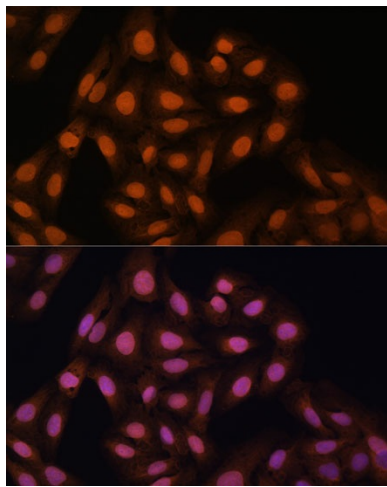
Western blot analysis of extracts from normal (control) and HP1 gamma/HP1 gamma/CBX3 knockout (KO) 293T cells, using HP1 gamma/HP1 gamma/CBX3 antibody ([TA374324]) at 1:1000 dilution. | Secondary antibody: HRP Goat Anti-Rabbit IgG (H+L) at 1:10000 dilution. | Lysates/proteins: 25ug per lane. | Blocking buffer: 3% nonfat dry milk in TBST. | Detection: ECL Basic Kit . | Exposure time: 1s.



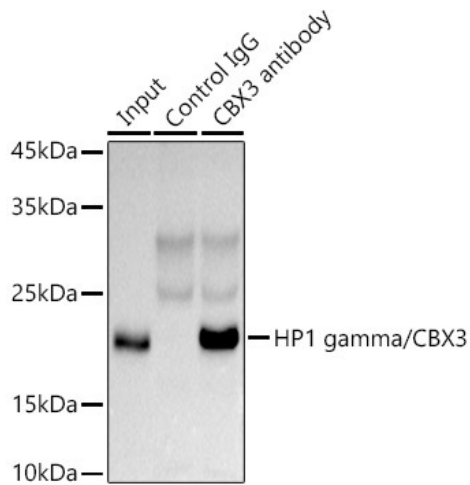
Western blot analysis of extracts of various cell lines, using HP1 gamma/HP1 gamma/CBX3 antibody ([TA374324]) at 1:1000 dilution. | Secondary antibody: HRP Goat Anti-Rabbit IgG (H+L) at 1:10000 dilution. | Lysates/proteins: 25ug per lane. | Blocking buffer: 3% nonfat dry milk in TBST. | Detection: ECL Basic Kit . | Exposure time: 5s.



Immunofluorescence analysis of C6 cells using HP1 gamma/HP1 gamma/CBX3 antibody ([TA374324]) at dilution of 1:100. Blue: DAPI for nuclear staining.



Immunofluorescence analysis of U-2 OS cells using HP1 gamma/HP1 gamma/CBX3 antibody ([TA374324]) at dilution of 1:100. Blue: DAPI for nuclear staining.



Immunoprecipitation analysis of 300ug extracts of HeLa cells using 3ug HP1 gamma/CBX3 antibody ([TA374324]). Western blot was performed from the immunoprecipitate using HP1 gamma/CBX3 antibody ([TA374324]) at a dilution of 1:1000.