

Product datasheet for **TA374305S**

CASTOR1 Rabbit Polyclonal Antibody

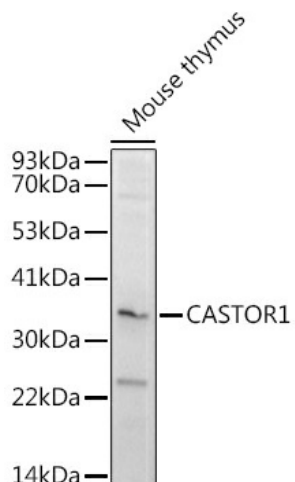
Product data:

Product Type:	Primary Antibodies
Applications:	ELISA, ICC/IF, IHC, WB
Recommended Dilution:	WB, 1:500 - 1:1000 IHC-P, 1:50 - 1:200 IF/ICC, 1:50 - 1:200 ELISA, Recommended starting concentration is 1 µg/mL. Please optimize the concentration based on your specific assay requirements.
Reactivity:	Human, Mouse, Rat
Modifications:	Unmodified
Host:	Rabbit
Isotype:	IgG
Clonality:	Polyclonal
Formulation:	Buffer: PBS with 0.02% sodium azide, 50% glycerol, pH 7.3.
Concentration:	lot specific
Purification:	Affinity purification
Conjugation:	Unconjugated
Storage:	Store at -20°C. Avoid freeze / thaw cycles.
Stability:	Shelf life: one year from despatch.
Predicted Protein Size:	36kDa
Gene Name:	GATS protein-like 3
Database Link:	Entrez Gene 652968 Human Q8WTX7
Background:	Enables arginine binding activity and identical protein binding activity. Involved in cellular response to L-arginine and negative regulation of TORC1 signaling. Located in cytosol. Colocalizes with GATOR2 complex.
Synonyms:	GATSL3

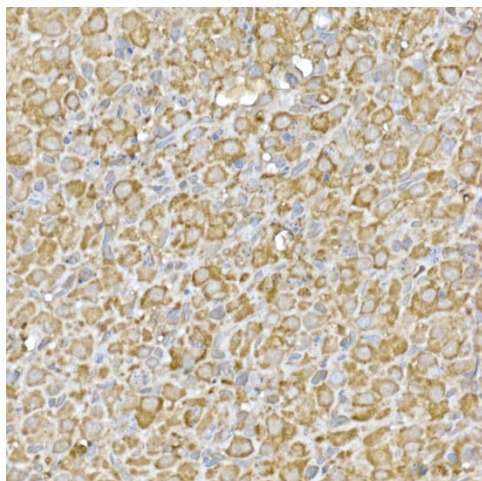


[View online »](#)

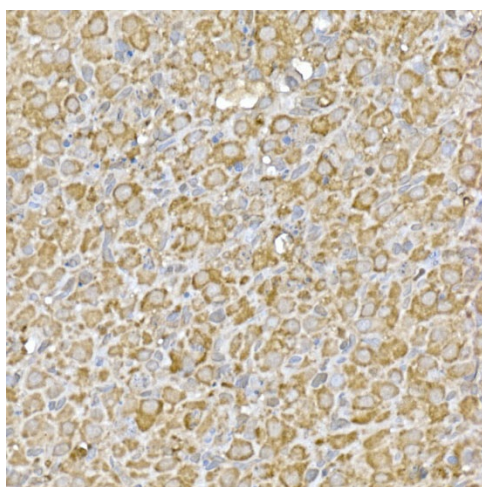
Product images:



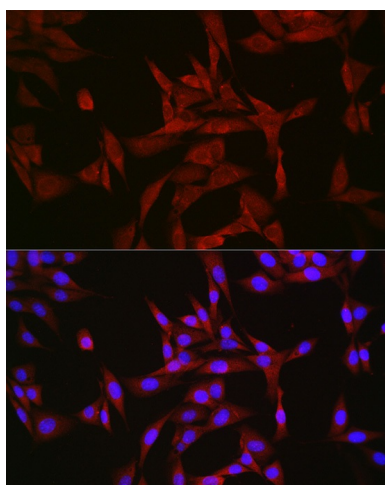
Western blot analysis of various lysates



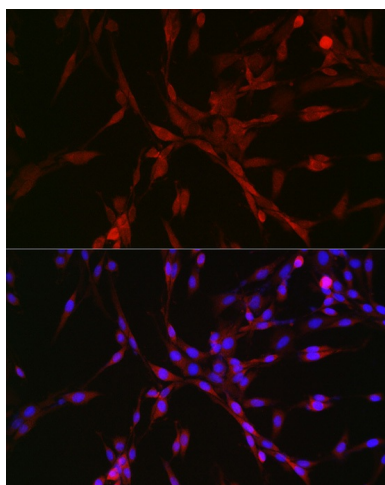
Immunohistochemistry analysis of paraffin-embedded Rat brain using CASTOR1 Rabbit pAb ([TA374305]) at dilution of 1:50 (40x lens). High pressure antigen retrieval performed with 0.01M Citrate Bufferr (pH 6.0) prior to IHC staining.



Immunohistochemistry analysis of paraffin-embedded Rat ovary using CASTOR1 Rabbit pAb ([TA374305]) at dilution of 1:50 (40x lens). High pressure antigen retrieval performed with 0.01M Citrate Buffer (pH 6.0) prior to IHC staining.



Immunofluorescence analysis of NIH/3T3 cells using CASTOR1 Rabbit pAb ([TA374305]) at dilution of 1:50 (40x lens). Secondary antibody: Cy3-conjugated Goat anti-Rabbit IgG (H+L) (AS007) at 1:500 dilution. Blue: DAPI for nuclear staining.



Immunofluorescence analysis of PC-12 cells using CASTOR1 Rabbit pAb ([TA374305]) at dilution of 1:50 (40x lens). Secondary antibody: Cy3-conjugated Goat anti-Rabbit IgG (H+L) (AS007) at 1:500 dilution. Blue: DAPI for nuclear staining.