

Product datasheet for **TA374305**

CASTOR1 Rabbit Polyclonal Antibody

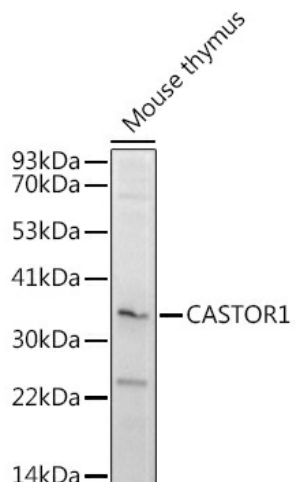
Product data:

Product Type:	Primary Antibodies
Applications:	ICC/IF, IHC, WB
Recommended Dilution:	WB,1:500 - 1:2000 IHC,1:50 - 1:200 IF,1:50 - 1:200
Reactivity:	Human, Mouse, Rat
Modifications:	Unmodified
Host:	Rabbit
Isotype:	IgG
Clonality:	Polyclonal
Immunogen:	Recombinant protein of human CASTOR1.
Formulation:	Buffer: PBS with 0.02% sodium azide,50% glycerol,pH7.3.
Concentration:	lot specific
Purification:	Affinity purification
Conjugation:	Unconjugated
Storage:	Store at -20°C. Avoid freeze / thaw cycles.
Stability:	Shelf life: one year from despatch.
Predicted Protein Size:	36kDa
Gene Name:	GATS protein-like 3
Database Link:	Entrez Gene 652968 Human Q8WTX7
Background:	Functions as an intracellular arginine sensor within the amino acid-sensing branch of the TORC1 signaling pathway. As a homodimer or a heterodimer with CASTOR2, binds and inhibits the GATOR subcomplex GATOR2 and thereby mTORC1. Binding of arginine to CASTOR1 allosterically disrupts the interaction of CASTOR1-containing dimers with GATOR2 which can in turn activate mTORC1 and the TORC1 signaling pathway.
Synonyms:	GATSL3

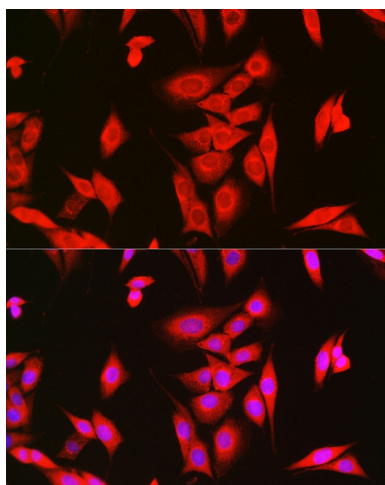


[View online »](#)

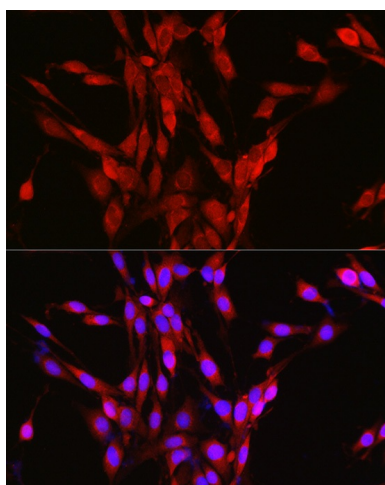
Product images:



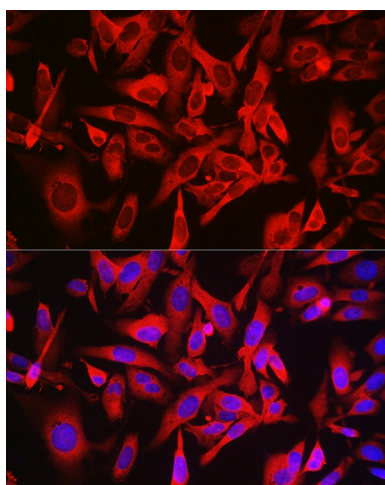
Western blot analysis of extracts of Mouse thymus, using (TA374305) at 1:1000 dilution. | Secondary antibody: HRP Goat Anti-Rabbit IgG (H+L) at 1:10000 dilution. | Lysates/proteins: 25ug per lane. | Blocking buffer: 3% nonfat dry milk in TBST. | Detection: ECL Basic Kit . | Exposure time: 180s.



Immunofluorescence analysis of NIH/3T3 cells using CASTOR1 Rabbit pAb (TA374305) at dilution of 1:50 (40x lens). Blue: DAPI for nuclear staining.



Immunofluorescence analysis of PC-12 cells using CASTOR1 Rabbit pAb (TA374305) at dilution of 1:50 (40x lens). Blue: DAPI for nuclear staining.



Immunofluorescence analysis of U2OS cells using CASTOR1 Rabbit pAb (TA374305) at dilution of 1:50 (40x lens). Blue: DAPI for nuclear staining.