

## Product datasheet for TA374298S

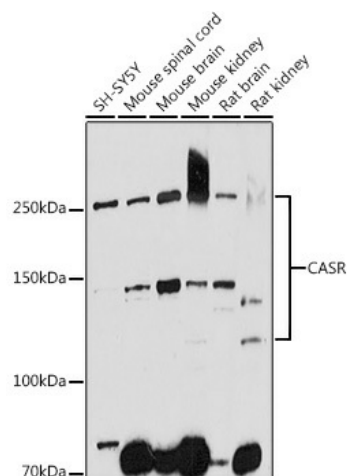
### Calcium Sensing Receptor (CASR) Rabbit Polyclonal Antibody

#### Product data:

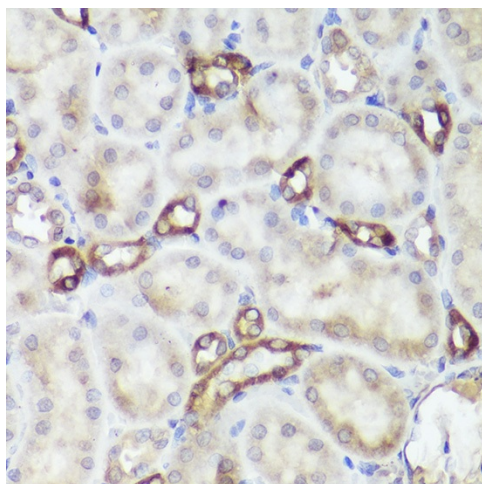
Product Type:	Primary Antibodies
Applications:	ELISA, IHC, WB
Recommended Dilution:	WB, 1:500 - 1:1000 IHC-P, 1:50 - 1:200 ELISA, Recommended starting concentration is 1 µg/mL. Please optimize the concentration based on your specific assay requirements.
Reactivity:	Human, Mouse, Rat
Modifications:	Unmodified
Host:	Rabbit
Isotype:	IgG
Clonality:	Polyclonal
Formulation:	Buffer: PBS with 0.02% sodium azide, 50% glycerol, pH 7.3.
Concentration:	lot specific
Purification:	Affinity purification
Conjugation:	Unconjugated
Storage:	Store at -20°C. Avoid freeze / thaw cycles.
Stability:	Shelf life: one year from despatch.
Predicted Protein Size:	121kDa
Gene Name:	calcium sensing receptor
Database Link:	<a href="#">Entrez Gene 846 Human P41180</a>
Background:	The protein encoded by this gene is a plasma membrane G protein-coupled receptor that senses small changes in circulating calcium concentration. The encoded protein couples this information to intracellular signaling pathways that modify parathyroid hormone secretion or renal cation handling, and thus this protein plays an essential role in maintaining mineral ion homeostasis. Mutations in this gene are a cause of familial hypocalciuric hypercalcemia, neonatal severe hyperparathyroidism, and autosomal dominant hypocalcemia.
Synonyms:	CAR; EIG8; FHH; FIH; GPRC2A; HHC; HHC1; MGC138441; NSHPT; PCAR1


[View online »](#)

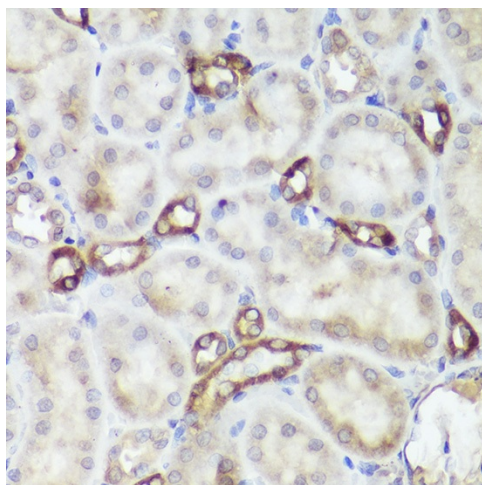
## Product images:



Western blot analysis of various lysates using CASR Rabbit pAb (TA374298) at 1:1000 dilution. Secondary antibody: HRP-conjugated Goat anti-Rabbit IgG (H+L) (AS014) at 1:10000 dilution. Lysates/proteins: 25µg per lane. Blocking buffer: 3% nonfat dry milk in TBST. Detection: ECL Enhanced Kit (RM00021). Exposure time: 180s.



Immunohistochemistry analysis of paraffin-embedded Mouse kidney using CASR Rabbit pAb (TA374298) at dilution of 1:50 (40x lens). High pressure antigen retrieval performed with 0.01M Citrate Bufferr (pH 6.0) prior to IHC staining.



Immunohistochemistry analysis of paraffin-embedded Rat kidney using CASR Rabbit pAb ([TA374298]) at dilution of 1:50 (40x lens). High pressure antigen retrieval performed with 0.01M Citrate Buffer (pH 6.0) prior to IHC staining.