

## Product datasheet for TA374296S

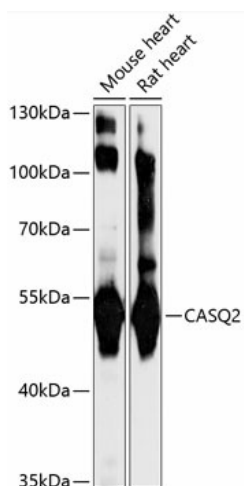
### CASQ2 Rabbit Polyclonal Antibody

#### Product data:

|                         |  |
|-------------------------|--|
| Product Type:           | Primary Antibodies   |
| Applications:           | ELISA, IHC, WB   |
| Recommended Dilution:   | WB, 1:500 - 1:2000<br>IHC-P, 1:50 - 1:100<br>ELISA, Recommended starting concentration is 1 µg/mL. Please optimize the concentration based on your specific assay requirements.  |
| Reactivity:             | Mouse, Rat   |
| Host:                   | Rabbit   |
| Isotype:                | IgG  |
| Clonality:              | Polyclonal   |
| Formulation:            | Buffer: PBS with 0.02% sodium azide, 50% glycerol, pH7.3.  |
| Concentration:          | lot specific   |
| Purification:           | Affinity purification  |
| Conjugation:            | Unconjugated   |
| Storage:                | Store at -20°C. Avoid freeze / thaw cycles.  |
| Stability:              | Shelf life: one year from despatch.  |
| Predicted Protein Size: | 46kDa  |
| Gene Name:              | calsequestrin 2  |
| Database Link:          | <a href="#">O14958</a>   |
| Background:             | The protein encoded by this gene specifies the cardiac muscle family member of the calsequestrin family. Calsequestrin is localized to the sarcoplasmic reticulum in cardiac and slow skeletal muscle cells. The protein is a calcium binding protein that stores calcium for muscle function. Mutations in this gene cause stress-induced polymorphic ventricular tachycardia, also referred to as catecholaminergic polymorphic ventricular tachycardia 2 (CPVT2), a disease characterized by bidirectional ventricular tachycardia that may lead to cardiac arrest. |
| Synonyms:               | FLJ26321; FLJ93514; PDIB2  |


[View online »](#)

## Product images:



Western blot analysis of various lysates using CASQ2 Rabbit pAb ([TA374296]) at 1:1000 dilution.

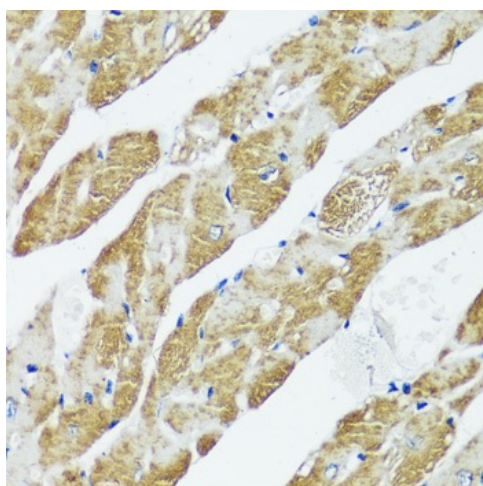
Secondary antibody: HRP-conjugated Goat anti-Rabbit IgG (H+L) (AS014) at 1:10000 dilution.

Lysates/proteins: 25µg per lane.

Blocking buffer: 3% nonfat dry milk in TBST.

Detection: ECL Basic Kit (RM00020).

Exposure time: 1s.



Immunohistochemistry analysis of paraffin-embedded Mouse heart using CASQ2 Rabbit pAb ([TA374296]) at dilution of 1:100 (40x lens).

Microwave antigen retrieval performed with 0.01M PBS Buffer (pH 7.2) prior to IHC staining.