

Product datasheet for TA374289S

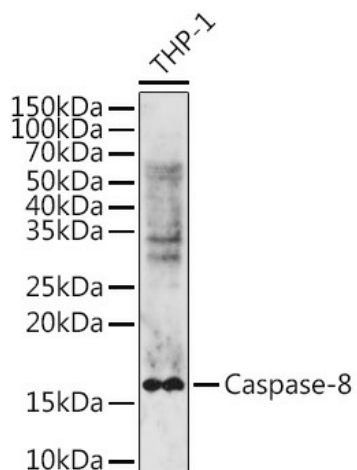
Casp8 Rabbit Polyclonal Antibody

Product data:

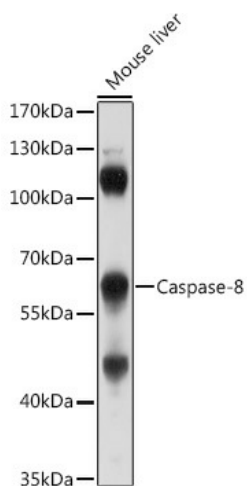
Product Type:	Primary Antibodies
Applications:	ELISA, ICC/IF, WB
Recommended Dilution:	WB, 1:500 - 1:1000 IF/ICC, 1:50 - 1:200 ELISA, Recommended starting concentration is 1 µg/mL. Please optimize the concentration based on your specific assay requirements.
Reactivity:	Human, Mouse
Modifications:	Unmodified
Host:	Rabbit
Isotype:	IgG
Clonality:	Polyclonal
Formulation:	Buffer: PBS with 0.02% sodium azide, 50% glycerol, pH 7.3.
Concentration:	lot specific
Purification:	Affinity purification
Conjugation:	Unconjugated
Storage:	Store at -20°C. Avoid freeze / thaw cycles.
Stability:	Shelf life: one year from despatch.
Predicted Protein Size:	55kDa
Gene Name:	caspase 8
Database Link:	Entrez Gene 12370 Mouse Q14790
Background:	This gene is part of a family of caspases, aspartate-specific cysteine proteases well studied for their involvement in immune and apoptosis signaling. This protein, an initiator of apoptotic cell death, is activated by death-inducing tumor necrosis family receptors and targets downstream effectors. In mouse deficiency of this gene can cause embryonic lethality. This protein may have a role in embryogenesis. Alternative splicing results in multiple transcript variants that encode different protein isoforms.
Synonyms:	ALPS2B; CAP4; Casp-8; FLICE; FLJ17672; MACH; MCH5; MGC78473; OTTHUMP00000163720


[View online »](#)

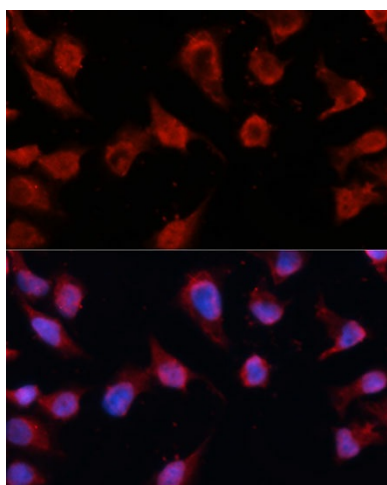
Product images:



Western blot analysis of lysates from Mouse liver



Western blot analysis of lysates from Mouse thymus



Immunofluorescence analysis of HeLa cells using Caspase-8 Rabbit pAb ([TA374289]) at dilution of 1:100. Blue: DAPI for nuclear staining.