

Product datasheet for **TA374266S**

COP (CARD16) Rabbit Polyclonal Antibody

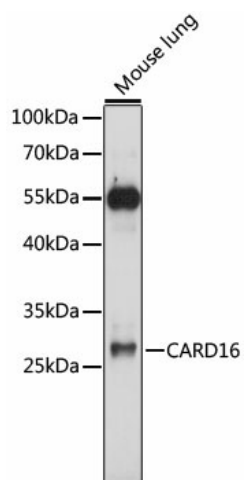
Product data:

Product Type:	Primary Antibodies
Applications:	ELISA, WB
Recommended Dilution:	WB, 1:500 - 1:2000 ELISA, Recommended starting concentration is 1 µg/mL. Please optimize the concentration based on your specific assay requirements.
Reactivity:	Mouse
Modifications:	Unmodified
Host:	Rabbit
Isotype:	IgG
Clonality:	Polyclonal
Formulation:	Buffer: PBS with 0.02% sodium azide, 50% glycerol, pH 7.3.
Concentration:	lot specific
Purification:	Affinity purification
Conjugation:	Unconjugated
Storage:	Store at -20°C. Avoid freeze / thaw cycles.
Stability:	Shelf life: one year from despatch.
Predicted Protein Size:	23kDa
Gene Name:	caspase recruitment domain family member 16
Database Link:	Q5EG05
Background:	Enables several functions, including CARD domain binding activity; cysteine-type endopeptidase inhibitor activity; and enzyme binding activity. Involved in several processes, including negative regulation of cysteine-type endopeptidase activity; regulation of gene expression; and regulation of signal transduction. Part of protease inhibitor complex.
Synonyms:	COP; COP1; Pseudo-ICE



[View online »](#)

Product images:



Western blot analysis of lysates from mouse lung