

## Product datasheet for **TA374239**

### **CAMSAP1L1 (CAMSAP2) Rabbit Polyclonal Antibody**

#### **Product data:**

<b>Product Type:</b>	Primary Antibodies
<b>Applications:</b>	WB
<b>Recommended Dilution:</b>	WB,1:500 - 1:2000
<b>Reactivity:</b>	Human
<b>Modifications:</b>	Unmodified
<b>Host:</b>	Rabbit
<b>Isotype:</b>	IgG
<b>Clonality:</b>	Polyclonal
<b>Immunogen:</b>	Recombinant fusion protein containing a sequence corresponding to amino acids 1-150 of human CAMSAP2 (NP_982284.1).
<b>Formulation:</b>	Buffer: PBS with 0.02% sodium azide,50% glycerol,pH7.3.
<b>Concentration:</b>	lot specific
<b>Purification:</b>	Affinity purification
<b>Conjugation:</b>	Unconjugated
<b>Storage:</b>	Store at -20°C. Avoid freeze / thaw cycles.
<b>Stability:</b>	Shelf life: one year from despatch.
<b>Predicted Protein Size:</b>	165kDa/166kDa/168kDa
<b>Gene Name:</b>	calmodulin regulated spectrin associated protein family member 2
<b>Database Link:</b>	<a href="#">Entrez Gene 23271 Human Q08AD1</a>



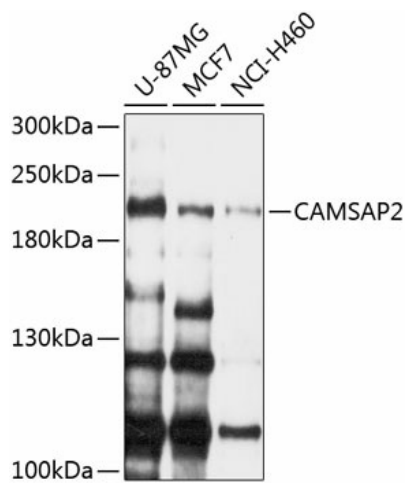
[View online »](#)

**Background:**

Key microtubule-organizing protein that specifically binds the minus-end of non-centrosomal microtubules and regulates their dynamics and organization. Specifically recognizes growing microtubule minus-ends and autonomously decorates and stabilizes microtubule lattice formed by microtubule minus-end polymerization. Acts on free microtubule minus-ends that are not capped by microtubule-nucleating proteins or other factors and protects microtubule minus-ends from depolymerization. In addition, it also reduces the velocity of microtubule polymerization. Through the microtubule cytoskeleton, also regulates the organization of cellular organelles including the Golgi and the early endosomes. Essential for the tethering, but not for nucleation of non-centrosomal microtubules at the Golgi: together with Golgi-associated proteins AKAP9 and PDE4DIP, required to tether non-centrosomal minus-end microtubules to the Golgi, an important step for polarized cell movement. Also acts as a regulator of neuronal polarity and development: localizes to non-centrosomal microtubule minus-ends in neurons and stabilizes non-centrosomal microtubules, which is required for neuronal polarity, axon specification and dendritic branch formation. Through the microtubule cytoskeleton, regulates the autophagosome transport.

**Synonyms:**

CAMSAP1L1; RP11-93N17.1

**Product images:**

Western blot analysis of extracts of various cell lines, using CAMSAP2 Antibody (TA374239) at 1:1000 dilution. | Secondary antibody: HRP Goat Anti-Rabbit IgG (H+L) at 1:10000 dilution. | Lysates/proteins: 25ug per lane. | Blocking buffer: 3% nonfat dry milk in TBST. | Detection: ECL Enhanced Kit. | Exposure time: 90s.