

## Product datasheet for **TA374238S**

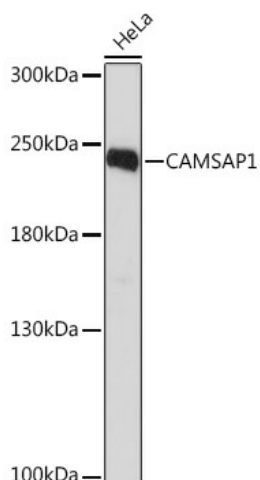
### CAMSAP1 Rabbit Polyclonal Antibody

#### Product data:

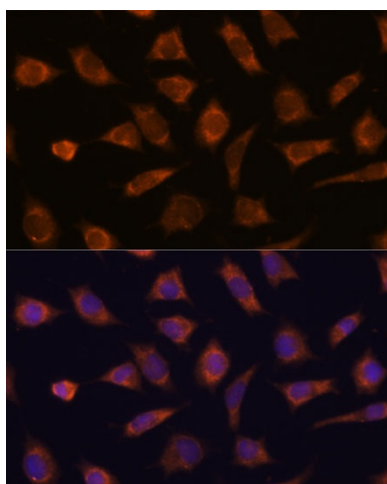
Product Type:	Primary Antibodies
Applications:	ELISA, ICC/IF, WB
Recommended Dilution:	WB, 1:500 - 1:2000 IF/ICC, 1:50 - 1:200 ELISA, Recommended starting concentration is 1 µg/mL. Please optimize the concentration based on your specific assay requirements.
Reactivity:	Human, Mouse
Modifications:	Unmodified
Host:	Rabbit
Isotype:	IgG
Clonality:	Polyclonal
Formulation:	Buffer: PBS with 0.02% sodium azide, 50% glycerol, pH 7.3.
Concentration:	lot specific
Purification:	Affinity purification
Conjugation:	Unconjugated
Storage:	Store at -20°C. Avoid freeze / thaw cycles.
Stability:	Shelf life: one year from despatch.
Predicted Protein Size:	178kDa
Gene Name:	calmodulin regulated spectrin associated protein 1
Database Link:	<a href="#">Entrez Gene 157922 Human</a> <a href="#">Q5T5Y3</a>
Background:	Enables microtubule minus-end binding activity and spectrin binding activity. Involved in several processes, including neuron projection development; regulation of cell morphogenesis; and regulation of microtubule polymerization. Located in microtubule. Colocalizes with microtubule minus-end.
Synonyms:	bA100C15.1; DKFZp434F195; DKFZp434G2311; FLJ31228; MGC163452; PRO2405



[View online »](#)

**Product images:**


Western blot analysis of lysates from HeLa cells



Immunofluorescence analysis of L929 cells using CAMSAP1 Rabbit pAb ([TA374238]) at dilution of 1:100. Secondary antibody: Cy3-conjugated Goat anti-Rabbit IgG (H+L) (AS007) at 1:500 dilution. Blue: DAPI for nuclear staining.