

## Product datasheet for **TA374238**

### CAMSAP1 Rabbit Polyclonal Antibody

#### Product data:

Product Type:	Primary Antibodies
Applications:	ICC/IF, WB
Recommended Dilution:	WB,1:500 - 1:2000 IF,1:50 - 1:200
Reactivity:	Human, Mouse
Modifications:	Unmodified
Host:	Rabbit
Isotype:	IgG
Clonality:	Polyclonal
Immunogen:	Recombinant fusion protein containing a sequence corresponding to amino acids 350-650 of human CAMSAP1 (NP_056262.3).
Formulation:	Buffer: PBS with 0.02% sodium azide,50% glycerol,pH7.3.
Concentration:	lot specific
Purification:	Affinity purification
Conjugation:	Unconjugated
Storage:	Store at -20°C. Avoid freeze / thaw cycles.
Stability:	Shelf life: one year from despatch.
Gene Name:	calmodulin regulated spectrin associated protein 1
Database Link:	<a href="#">Entrez Gene 157922 Human</a> <a href="#">Q5T5Y3</a>



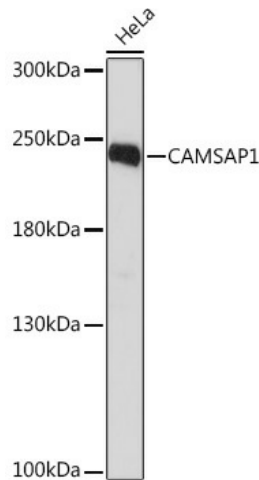
[View online »](#)

**Background:**

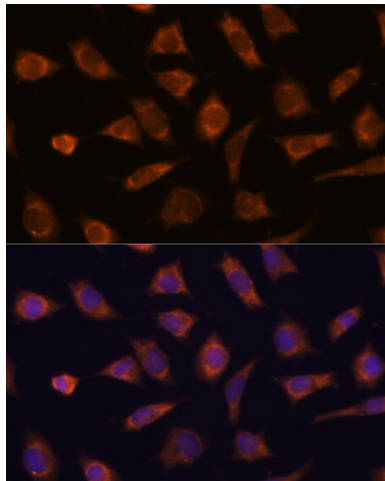
Key microtubule-organizing protein that specifically binds the minus-end of non-centrosomal microtubules and regulates their dynamics and organization. Specifically recognizes growing microtubule minus-ends and stabilizes microtubules. Acts on free microtubule minus-ends that are not capped by microtubule-nucleating proteins or other factors and protects microtubule minus-ends from depolymerization. In contrast to CAMSAP2 and CAMSAP3, tracks along the growing tips of minus-end microtubules without significantly affecting the polymerization rate: binds at the very tip of the microtubules minus-end and acts as a minus-end tracking protein (-TIP that dissociates from microtubules after allowing tubulin incorporation. Through interaction with spectrin may regulate neurite outgrowth.

**Synonyms:**

bA100C15.1; DKFZp434F195; DKFZp434G2311; FLJ31228; MGC163452; PRO2405

**Product images:**

Western blot analysis of extracts of HeLa cells, using CAMSAP1 Rabbit pAb (TA374238) at 1:1000 dilution. | Secondary antibody: HRP Goat Anti-Rabbit IgG (H+L) at 1:10000 dilution. | Lysates/proteins: 25ug per lane. | Blocking buffer: 3% nonfat dry milk in TBST. | Detection: ECL Basic Kit. | Exposure time: 90s.



Immunofluorescence analysis of L929 cells using CAMSAP1 antibody (TA374238) at dilution of 1:100. Blue: DAPI for nuclear staining.