

Product datasheet for **TA374235**

CAMKV Rabbit Polyclonal Antibody

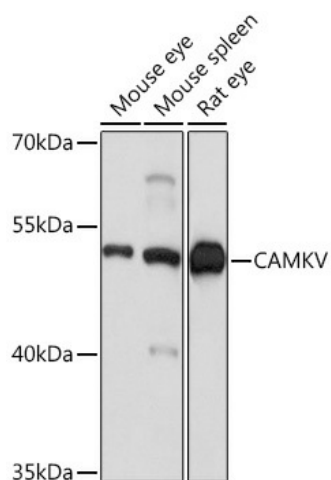
Product data:

Product Type:	Primary Antibodies
Applications:	ICC/IF, WB
Recommended Dilution:	WB,1:500 - 1:2000 IF,1:50 - 1:200
Reactivity:	Human, Mouse, Rat
Host:	Rabbit
Isotype:	IgG
Clonality:	Polyclonal
Immunogen:	Recombinant fusion protein containing a sequence corresponding to amino acids 1-285 of human CAMKV (NP_076951.2).
Formulation:	Buffer: PBS with 0.02% sodium azide,50% glycerol,pH7.3.
Concentration:	lot specific
Purification:	Affinity purification
Conjugation:	Unconjugated
Storage:	Store at -20°C. Avoid freeze / thaw cycles.
Stability:	Shelf life: one year from despatch.
Predicted Protein Size:	51kDa/54kDa
Gene Name:	CaM kinase like vesicle associated
Database Link:	Entrez Gene 79012 Human Q8NCB2
Background:	Does not appear to have detectable kinase activity.
Synonyms:	1G5; MGC8407; VACAMKL

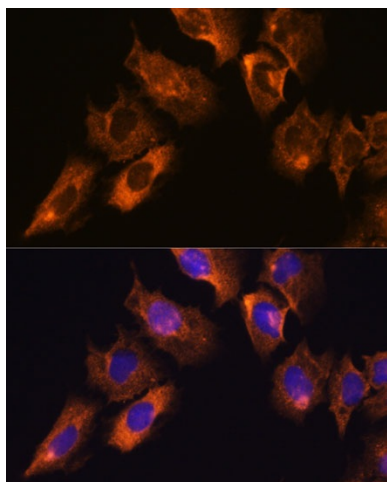


[View online »](#)

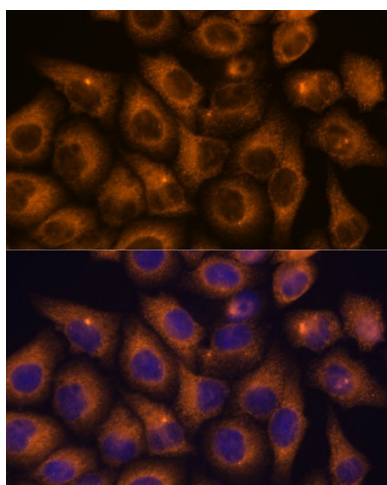
Product images:



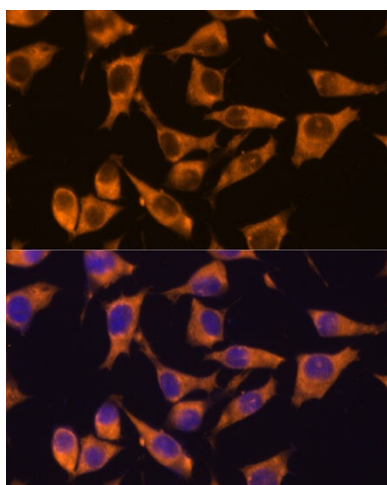
Western blot analysis of extracts of various cell lines, using CAMKV Rabbit pAb (TA374235) at 1:1000 dilution. | Secondary antibody: HRP Goat Anti-Rabbit IgG (H+L) at 1:10000 dilution. | Lysates/proteins: 25ug per lane. | Blocking buffer: 3% nonfat dry milk in TBST. | Detection: ECL Basic Kit . | Exposure time: 1s.



Immunofluorescence analysis of C6 cells using CAMKV antibody (TA374235) at dilution of 1:100. Blue: DAPI for nuclear staining.



Immunofluorescence analysis of HeLa cells using CAMKV antibody (TA374235) at dilution of 1:100. Blue: DAPI for nuclear staining.



Immunofluorescence analysis of L929 cells using CAMKV antibody (TA374235) at dilution of 1:100. Blue: DAPI for nuclear staining.