

Product datasheet for **TA374229**

CaMKI gamma (CAMK1G) Rabbit Polyclonal Antibody

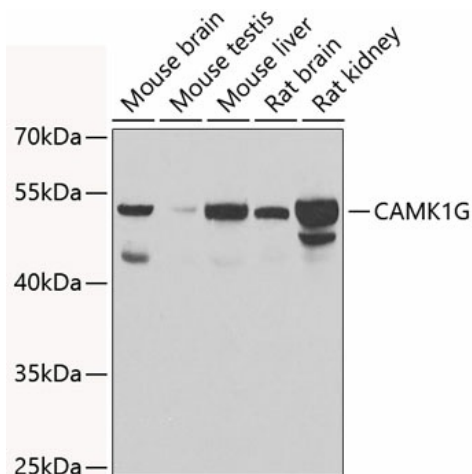
Product data:

Product Type:	Primary Antibodies
Applications:	WB
Recommended Dilution:	WB,1:500 - 1:2000
Reactivity:	Human, Mouse, Rat
Modifications:	Unmodified
Host:	Rabbit
Isotype:	IgG
Clonality:	Polyclonal
Immunogen:	Recombinant fusion protein containing a sequence corresponding to amino acids 217-476 of human CAMK1G (NP_065172.1).
Formulation:	Buffer: PBS with 0.02% sodium azide,50% glycerol,pH7.3.
Concentration:	lot specific
Purification:	Affinity purification
Conjugation:	Unconjugated
Storage:	Store at -20°C. Avoid freeze / thaw cycles.
Stability:	Shelf life: one year from despatch.
Predicted Protein Size:	51kDa/53kDa
Gene Name:	calcium/calmodulin dependent protein kinase IG
Database Link:	Entrez Gene 57172 Human Q96NX5
Background:	This gene encodes a protein similar to calcium/calmodulin dependent protein kinase, however, its exact function is not known.
Synonyms:	CaMKI-gamma; CaMKIG; CLICKIII; dJ272L16.1; OTTHUMP00000034556; VWS1

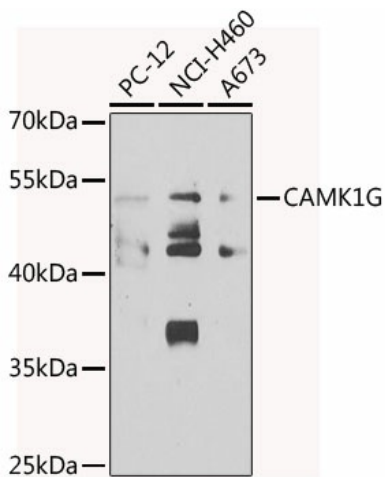


[View online »](#)

Product images:



Western blot analysis of extracts of various cell lines, using CAMK1G antibody (TA374229) at 1:1000 dilution. | Secondary antibody: HRP Goat Anti-Rabbit IgG (H+L) at 1:10000 dilution. | Lysates/proteins: 25ug per lane. | Blocking buffer: 3% nonfat dry milk in TBST. | Detection: ECL Basic Kit . | Exposure time: 30s.



Western blot analysis of extracts of various cell lines, using CAMK1G antibody (TA374229) at 1:1000 dilution. | Secondary antibody: HRP Goat Anti-Rabbit IgG (H+L) at 1:10000 dilution. | Lysates/proteins: 25ug per lane. | Blocking buffer: 3% nonfat dry milk in TBST. | Detection: ECL Basic Kit . | Exposure time: 90s.