

## Product datasheet for **TA374221S**

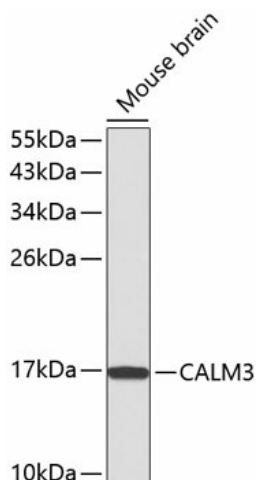
### **CALM3 Rabbit Polyclonal Antibody**

#### **Product data:**

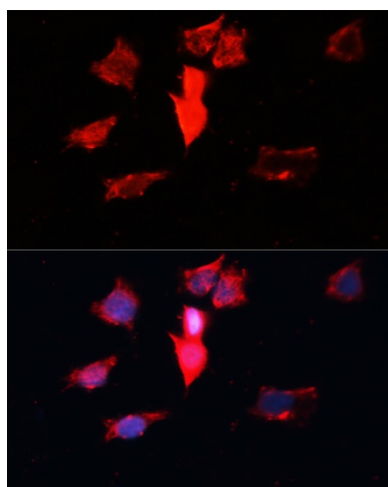
<b>Product Type:</b>	Primary Antibodies
<b>Applications:</b>	ICC/IF, WB
<b>Recommended Dilution:</b>	WB,1:500 - 1:2000 IF,1:50 - 1:100
<b>Reactivity:</b>	Human, Mouse
<b>Modifications:</b>	Unmodified
<b>Host:</b>	Rabbit
<b>Isotype:</b>	IgG
<b>Clonality:</b>	Polyclonal
<b>Immunogen:</b>	A synthetic peptide corresponding to a sequence within amino acids 1-100 of human CALM3 (NP_005175.2).
<b>Formulation:</b>	Buffer: PBS with 0.02% sodium azide,50% glycerol,pH7.3.
<b>Concentration:</b>	lot specific
<b>Purification:</b>	Affinity purification
<b>Conjugation:</b>	Unconjugated
<b>Storage:</b>	Store at -20°C. Avoid freeze / thaw cycles.
<b>Stability:</b>	Shelf life: one year from despatch.
<b>Predicted Protein Size:</b>	17kDa
<b>Gene Name:</b>	calmodulin 3 (phosphorylase kinase, delta)
<b>Database Link:</b>	<a href="#">Entrez Gene 808 Human P62158</a>
<b>Background:</b>	This gene encodes a member of a family of proteins that binds calcium and functions as a enzymatic co-factor. Activity of this protein is important in the regulation of the cell cycle and cytokinesis. Multiple alternatively spliced transcript variants have been observed at this gene.
<b>Synonyms:</b>	CALM; CALML2; CaM; CAM1; CAM2; CAM3; CAMB; CAMC; CAMIII; PHKD; PHKD3



[View online »](#)

**Product images:**

Western blot analysis of extracts of mouse brain, using CALM3 antibody ([TA374221]). | Secondary antibody: HRP Goat Anti-Rabbit IgG (H+L) at 1:10000 dilution. | Lysates/proteins: 25ug per lane. | Blocking buffer: 3% nonfat dry milk in TBST.



Immunofluorescence analysis of HeLa cells using CALM3 antibody ([TA374221]) at dilution of 1:100. Blue: DAPI for nuclear staining.