

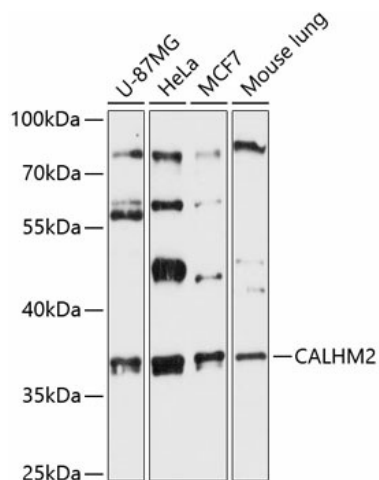
## Product datasheet for **TA374218S**

### CALHM2 Rabbit Polyclonal Antibody

#### Product data:

Product Type:	Primary Antibodies
Applications:	ELISA, WB
Recommended Dilution:	WB, 1:100 - 1:500 ELISA, Recommended starting concentration is 1 µg/mL. Please optimize the concentration based on your specific assay requirements.
Reactivity:	Human, Rat
Modifications:	Unmodified
Host:	Rabbit
Isotype:	IgG
Clonality:	Polyclonal
Formulation:	Buffer: PBS with 0.02% sodium azide, 50% glycerol, pH 7.3.
Concentration:	lot specific
Purification:	Affinity purification
Conjugation:	Unconjugated
Storage:	Store at -20°C. Avoid freeze / thaw cycles.
Stability:	Shelf life: one year from despatch.
Predicted Protein Size:	36kDa
Gene Name:	calcium homeostasis modulator 2
Database Link:	<a href="#">Entrez Gene 51063 Human Q9HA72</a>
Background:	Predicted to enable cation channel activity. Involved in positive regulation of apoptotic process. Predicted to be integral component of plasma membrane.
Synonyms:	FAM26B

[View online »](#)

**Product images:**


Western blot analysis of lysates from Rat lung