

Product datasheet for **TA374216S**

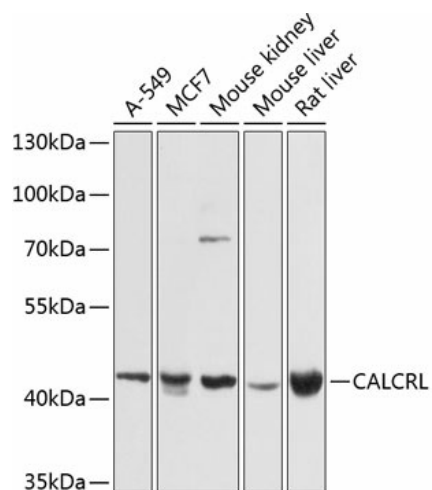
CRLR (CALCRL) Rabbit Polyclonal Antibody

Product data:

Product Type:	Primary Antibodies
Applications:	ELISA, WB
Recommended Dilution:	WB, 1:500 - 1:2000 ELISA, Recommended starting concentration is 1 µg/mL. Please optimize the concentration based on your specific assay requirements.
Reactivity:	Human, Mouse, Rat
Modifications:	Unmodified
Host:	Rabbit
Isotype:	IgG
Clonality:	Polyclonal
Formulation:	Buffer: PBS with 0.02% sodium azide, 50% glycerol, pH 7.3.
Concentration:	lot specific
Purification:	Affinity purification
Conjugation:	Unconjugated
Storage:	Store at -20°C. Avoid freeze / thaw cycles.
Stability:	Shelf life: one year from despatch.
Predicted Protein Size:	53kDa
Gene Name:	calcitonin receptor like receptor
Database Link:	Entrez Gene 10203 Human Q16602
Background:	Enables adrenomedullin binding activity; adrenomedullin receptor activity; and calcitonin gene-related peptide receptor activity. Involved in several processes, including G protein-coupled receptor signaling pathway; cellular response to sucrose stimulus; and receptor internalization. Located in endoplasmic reticulum; endosome; and lysosome. Part of CGRP receptor complex and adrenomedullin receptor complex. Colocalizes with plasma membrane. Implicated in hereditary lymphedema.
Synonyms:	CGRPR; CRLR; OTTHUMP00000205433; OTTHUMP00000205434



[View online »](#)

Product images:


Western blot analysis of various lysates using CALCRL Rabbit pAb (TA374216) at 1:1000 dilution.

Secondary antibody: HRP-conjugated Goat anti-Rabbit IgG (H+L) (AS014) at 1:10000 dilution.

Lysates/proteins: 25µg per lane.

Blocking buffer: 3% nonfat dry milk in TBST.

Detection: ECL Basic Kit (RM00020).

Exposure time: 15s.