

Product datasheet for **TA374216**

CRLR (CALCRL) Rabbit Polyclonal Antibody

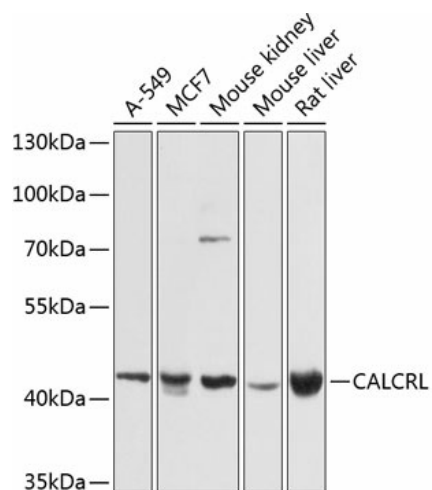
Product data:

Product Type:	Primary Antibodies
Applications:	WB
Recommended Dilution:	WB,1:500 - 1:2000
Reactivity:	Human, Mouse, Rat
Modifications:	Unmodified
Host:	Rabbit
Isotype:	IgG
Clonality:	Polyclonal
Immunogen:	Recombinant fusion protein containing a sequence corresponding to amino acids 392-461 of human CALCRL (NP_005786.1).
Formulation:	Buffer: PBS with 0.02% sodium azide,50% glycerol,pH7.3.
Concentration:	lot specific
Purification:	Affinity purification
Conjugation:	Unconjugated
Storage:	Store at -20°C. Avoid freeze / thaw cycles.
Stability:	Shelf life: one year from despatch.
Predicted Protein Size:	52kDa
Gene Name:	calcitonin receptor like receptor
Database Link:	Entrez Gene 10203 Human Q16602
Background:	Receptor for calcitonin-gene-related peptide (CGRP together with RAMP1 and receptor for adrenomedullin together with RAMP3 (By similarity. Receptor for adrenomedullin together with RAMP2. The activity of this receptor is mediated by G proteins which activate adenylyl cyclase.
Synonyms:	CGRPR; CRLR; OTTHUMP00000205433; OTTHUMP00000205434



[View online »](#)

Product images:



Western blot analysis of extracts of various cell lines, using CALCRL antibody (TA374216) at 1:1000 dilution. | Secondary antibody: HRP Goat Anti-Rabbit IgG (H+L) at 1:10000 dilution. | Lysates/proteins: 25ug per lane. | Blocking buffer: 3% nonfat dry milk in TBST. | Detection: ECL Basic Kit. | Exposure time: 15s.