

Product datasheet for TA374206S

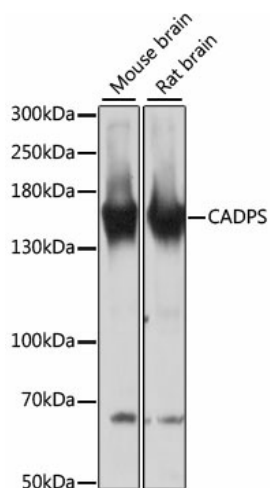
CAPS1 (CADPS) Rabbit Polyclonal Antibody

Product data:

Product Type:	Primary Antibodies
Applications:	ELISA, WB
Recommended Dilution:	WB, 1:1000 - 1:2000 ELISA, Recommended starting concentration is 1 µg/mL. Please optimize the concentration based on your specific assay requirements.
Reactivity:	Mouse, Rat
Modifications:	Unmodified
Host:	Rabbit
Isotype:	IgG
Clonality:	Polyclonal
Formulation:	Buffer: PBS with 0.02% sodium azide, 50% glycerol, pH 7.3.
Concentration:	lot specific
Purification:	Affinity purification
Conjugation:	Unconjugated
Storage:	Store at -20°C. Avoid freeze / thaw cycles.
Stability:	Shelf life: one year from despatch.
Predicted Protein Size:	153kDa
Gene Name:	Ca ²⁺ dependent secretion activator
Database Link:	Q9ULU8
Background:	This gene encodes a novel neural/endocrine-specific cytosolic and peripheral membrane protein required for the Ca ²⁺ -regulated exocytosis of secretory vesicles. The protein acts at a stage in exocytosis that follows ATP-dependent priming, which involves the essential synthesis of phosphatidylinositol 4,5-bisphosphate (PtdIns(4,5)P ₂). Alternative splicing has been observed at this locus and three variants, encoding distinct isoforms, are described.
Synonyms:	CADPS1; CAPS; CAPS-1; CAPS1; KIAA1121


[View online »](#)

Product images:



Western blot analysis of various lysates using CAPS1 (CADPS) Rabbit pAb (TA374206) at 1:3000 dilution.

Secondary antibody: HRP-conjugated Goat anti-Rabbit IgG (H+L) (AS014) at 1:10000 dilution.

Lysates/proteins: 25µg per lane.

Blocking buffer: 3% nonfat dry milk in TBST.

Detection: ECL Basic Kit (RM00020).

Exposure time: 30s.