

Product datasheet for **TA374206**

CAPS1 (CADPS) Rabbit Polyclonal Antibody

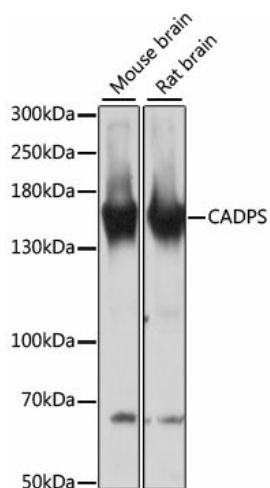
Product data:

Product Type:	Primary Antibodies
Applications:	WB
Recommended Dilution:	WB,1:1000 - 1:2000
Reactivity:	Mouse, Rat
Modifications:	Unmodified
Host:	Rabbit
Isotype:	IgG
Clonality:	Polyclonal
Immunogen:	Recombinant fusion protein containing a sequence corresponding to amino acids 1020-1100 of human CADPS (NP_899630.1).
Formulation:	Buffer: PBS with 0.02% sodium azide,50% glycerol,pH7.3.
Concentration:	lot specific
Purification:	Affinity purification
Conjugation:	Unconjugated
Storage:	Store at -20°C. Avoid freeze / thaw cycles.
Stability:	Shelf life: one year from despatch.
Predicted Protein Size:	50kDa/144kDa/148kDa/152kDa/153kDa
Gene Name:	Ca ²⁺ dependent secretion activator
Database Link:	Q9ULU8
Background:	This gene encodes a novel neural/endocrine-specific cytosolic and peripheral membrane protein required for the Ca ²⁺ -regulated exocytosis of secretory vesicles. The protein acts at a stage in exocytosis that follows ATP-dependent priming, which involves the essential synthesis of phosphatidylinositol 4,5-bisphosphate (PtdIns(4,5)P ₂). Alternative splicing has been observed at this locus and three variants, encoding distinct isoforms, are described.
Synonyms:	CADPS1; CAPS; CAPS-1; CAPS1; KIAA1121



[View online »](#)

Product images:



Western blot analysis of extracts of various cell lines, using CADPS antibody (TA374206) at 1:3000 dilution. | Secondary antibody: HRP Goat Anti-Rabbit IgG (H+L) at 1:10000 dilution. | Lysates/proteins: 25ug per lane. | Blocking buffer: 3% nonfat dry milk in TBST. | Detection: ECL Basic Kit . | Exposure time: 30s.