

## Product datasheet for **TA374205S**

### CADM3 Rabbit Polyclonal Antibody

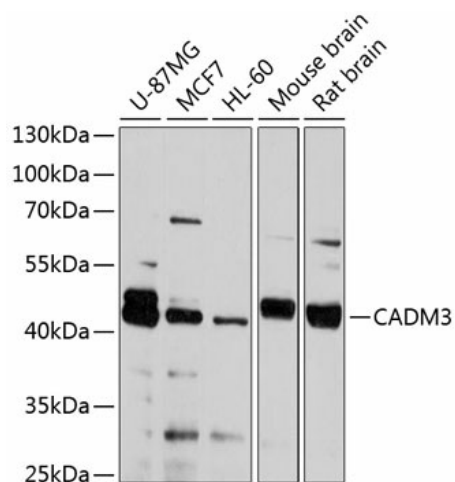
#### Product data:

Product Type:	Primary Antibodies
Applications:	WB
Recommended Dilution:	WB,1:500 - 1:2000
Reactivity:	Human, Mouse, Rat
Modifications:	Unmodified
Host:	Rabbit
Isotype:	IgG
Clonality:	Polyclonal
Immunogen:	Recombinant fusion protein containing a sequence corresponding to amino acids 25-330 of human CADM3 (NP_001120645.1).
Formulation:	Buffer: PBS with 0.02% sodium azide,50% glycerol,pH7.3.
Concentration:	lot specific
Purification:	Affinity purification
Conjugation:	Unconjugated
Storage:	Store at -20°C. Avoid freeze / thaw cycles.
Stability:	Shelf life: one year from despatch.
Predicted Protein Size:	38kDa/43kDa/47kDa
Gene Name:	cell adhesion molecule 3
Database Link:	<a href="#">Entrez Gene 57863 Human Q8N126</a>
Background:	The protein encoded by this gene is a calcium-independent cell-cell adhesion protein that can form homodimers or heterodimers with other nectin proteins. The encoded protein has both homophilic and heterophilic cell-cell adhesion activity. This gene is reported to be a tumor suppressor gene. [provided by RefSeq, Oct 2016]
Synonyms:	BlgR; FLJ10698; IGSF4B; Necl-1; NECL1; SynCAM3; TSLL1



[View online »](#)

## Product images:



Western blot analysis of extracts of various cell lines, using CADM3 antibody ([TA374205]) at 1:2000 dilution. | Secondary antibody: HRP Goat Anti-Rabbit IgG (H+L) at 1:10000 dilution. | Lysates/proteins: 25ug per lane. | Blocking buffer: 3% nonfat dry milk in TBST. | Detection: ECL Basic Kit . | Exposure time: 30s.