

## Product datasheet for **TA374152S**

### C3 Rabbit Polyclonal Antibody

#### Product data:

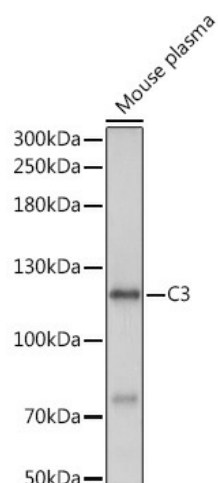
Product Type:	Primary Antibodies
Applications:	ELISA, WB
Recommended Dilution:	WB, 1:500 - 1:2000 ELISA, Recommended starting concentration is 1 µg/mL. Please optimize the concentration based on your specific assay requirements.
Reactivity:	Mouse, Rat
Host:	Rabbit
Isotype:	IgG
Clonality:	Polyclonal
Formulation:	PBS with 0.05% proclin300, 50% glycerol, pH7.3.
Concentration:	lot specific
Purification:	Affinity purification
Conjugation:	Unconjugated
Storage:	Store at -20°C. Avoid freeze / thaw cycles.
Stability:	Shelf life: one year from despatch.
Predicted Protein Size:	186kDa
Gene Name:	complement component 3
Database Link:	<a href="#">Entrez Gene 12266 Mouse P01024</a>
Background:	This gene encodes complement protein C3 which plays a central role in the classical, alternative and lectin activation pathways of the complement system. The encoded preproprotein undergoes a multi-step processing to generate various functional peptides. Mice deficient in the encoded protein fail to clear bacteria from the blood stream upon infection, display diminished airway hyperresponsiveness and lung eosinophilia upon allergen-induced pulmonary allergy, and develop severe lung injury after deposition of IgG immune complexes. Deficiency of the homolog of the encoded protein in humans was found to be associated with increased susceptibility to infections, age-related macular degeneration, and atypical hemolytic uremic syndrome.



[View online »](#)

**Synonyms:** AHUS5; ARMD9; ASP; CPAMD1

**Product images:**



Western blot analysis of lysates from Rat lung