

Product datasheet for **TA374141**

CTRP6 (C1QTNF6) Rabbit Polyclonal Antibody

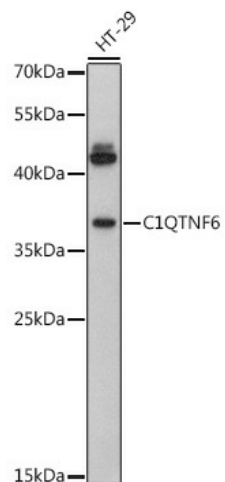
Product data:

Product Type:	Primary Antibodies
Applications:	IHC, WB
Recommended Dilution:	WB,1:500 - 1:2000 IHC,1:50 - 1:200
Reactivity:	Human, Mouse, Rat
Host:	Rabbit
Isotype:	IgG
Clonality:	Polyclonal
Immunogen:	Recombinant fusion protein containing a sequence corresponding to amino acids 47-190 of human C1QTNF6 (NP_114116.3).
Formulation:	Buffer: PBS with 0.02% sodium azide,50% glycerol,pH7.3.
Concentration:	lot specific
Purification:	Affinity purification
Conjugation:	Unconjugated
Storage:	Store at -20°C. Avoid freeze / thaw cycles.
Stability:	Shelf life: one year from despatch.
Predicted Protein Size:	17kDa/28kDa/30kDa
Gene Name:	C1q and tumor necrosis factor related protein 6
Database Link:	Entrez Gene 114904 Human Q9BXI9
Background:	C1QTNF6 (C1q and tumor necrosis factor related protein 6) is a protein-coding gene. GO annotations related to this gene include identical protein binding. An important paralog of this gene is C1QTNF4.
Synonyms:	CTRP6; ZACRP6



[View online »](#)

Product images:



Western blot analysis of extracts of HT-29 cells, using C1QTNF6 antibody (TA374141) at 1:3000 dilution. | Secondary antibody: HRP Goat Anti-Rabbit IgG (H+L) at 1:10000 dilution. | Lysates/proteins: 25ug per lane. | Blocking buffer: 3% nonfat dry milk in TBST. | Detection: ECL Basic Kit . | Exposure time: 90s.