

Product datasheet for **TA374134**

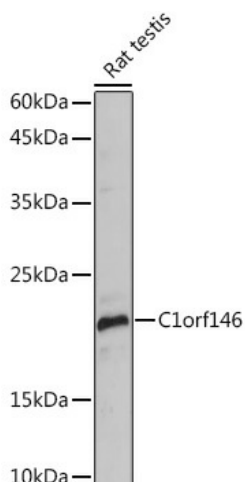
1700028K03Rik Rabbit Polyclonal Antibody

Product data:

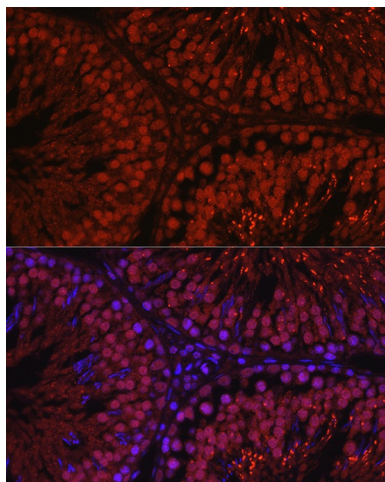
| | |
|-----------------------|---|
| Product Type: | Primary Antibodies |
| Applications: | ICC/IF, WB |
| Recommended Dilution: | WB, 1:500 - 1:2000 IF, 1:50 - 1:200 |
| Reactivity: | Mouse, Rat |
| Host: | Rabbit |
| Isotype: | IgG |
| Clonality: | Polyclonal |
| Immunogen: | Recombinant protein of Mouse C1orf146. |
| Formulation: | Buffer: PBS with 0.02% sodium azide, 50% glycerol, pH 7.3. |
| Concentration: | lot specific |
| Purification: | Affinity purification |
| Conjugation: | Unconjugated |
| Storage: | Store at -20°C. Avoid freeze / thaw cycles. |
| Stability: | Shelf life: one year from despatch. |
| Gene Name: | RIKEN cDNA 1700028K03 gene |
| Database Link: | Entrez Gene 76421 Mouse Q3KQP7 |
| Background: | Plays a key role in reinforcing the integrity of the central element of the synaptonemal complex (SC) thereby stabilizing SC, ensuring progression of meiotic prophase I in male and female germ cells. Promotes homologous recombination and crossing-over in meiotic prophase I via its association with SHOC1. Required for the localization of TEX11 and MSH4 to recombination intermediates. |
| Synonyms: | MGC117884 |



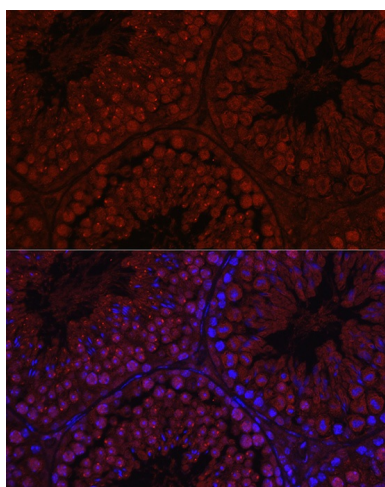
[View online »](#)

Product images:

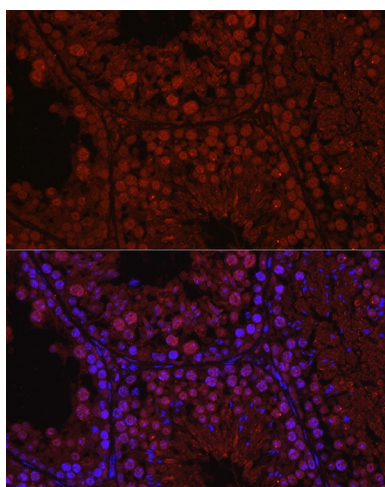
Western blot analysis of extracts of Rat testis, using C1orf146 Rabbit pAb (TA374134) at 1:1000 dilution. | Secondary antibody: HRP Goat Anti-Rabbit IgG (H+L) at 1:10000 dilution. | Lysates/proteins: 25ug per lane. | Blocking buffer: 3% nonfat dry milk in TBST. | Detection: ECL Basic Kit . | Exposure time: 30s.



Immunofluorescence analysis of rat testis using C1orf146 Rabbit pAb (TA374134) at dilution of 1:100 (40x lens). Blue: DAPI for nuclear staining.



Immunofluorescence analysis of Mouse testis using C1orf146 Rabbit pAb (TA374134) at dilution of 1:100 (40x lens). Blue: DAPI for nuclear staining.



Immunofluorescence analysis of mouse testis using C1orf146 Rabbit pAb (TA374134) at dilution of 1:100 (40x lens). Blue: DAPI for nuclear staining.