

## Product datasheet for **TA374132**

### **C1GALT1 Rabbit Polyclonal Antibody**

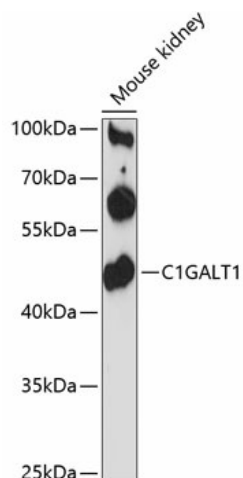
#### **Product data:**

<b>Product Type:</b>	Primary Antibodies
<b>Applications:</b>	WB
<b>Recommended Dilution:</b>	WB,1:500 - 1:2000
<b>Reactivity:</b>	Human, Mouse
<b>Modifications:</b>	Unmodified
<b>Host:</b>	Rabbit
<b>Isotype:</b>	IgG
<b>Clonality:</b>	Polyclonal
<b>Immunogen:</b>	Recombinant fusion protein containing a sequence corresponding to amino acids 194-363 of human C1GALT1 (NP_064541.1).
<b>Formulation:</b>	Buffer: PBS with 0.02% sodium azide,50% glycerol,pH7.3.
<b>Concentration:</b>	lot specific
<b>Purification:</b>	Affinity purification
<b>Conjugation:</b>	Unconjugated
<b>Storage:</b>	Store at -20°C. Avoid freeze / thaw cycles.
<b>Stability:</b>	Shelf life: one year from despatch.
<b>Predicted Protein Size:</b>	35kDa/42kDa
<b>Gene Name:</b>	core 1 synthase, glycoprotein-N-acetylgalactosamine 3-beta-galactosyltransferase 1
<b>Database Link:</b>	<a href="#">Entrez Gene 56913 Human Q9NS00</a>
<b>Background:</b>	The protein encoded by this gene generates the common core 1 O-glycan structure, Gal-beta-1-3GalNAc-R, by the transfer of Gal from UDP-Gal to GalNAc-alpha-1-R. Core 1 is a precursor for many extended mucin-type O-glycans on cell surface and secreted glycoproteins. Studies in mice suggest that this gene plays a key role in thrombopoiesis and kidney homeostasis.
<b>Synonyms:</b>	B3Gal-T8; C1GALT; T-synthase



[View online »](#)

## Product images:



Western blot analysis of extracts of mouse kidney, using C1GALT1 antibody (TA374132) at 1:3000 dilution. | Secondary antibody: HRP Goat Anti-Rabbit IgG (H+L) at 1:10000 dilution. | Lysates/proteins: 25ug per lane. | Blocking buffer: 3% nonfat dry milk in TBST. | Detection: ECL Basic Kit . | Exposure time: 90s.