

## Product datasheet for **TA374124S**

### **C14orf166 (RTRAF) Rabbit Polyclonal Antibody**

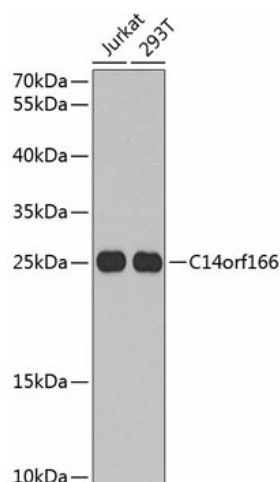
#### **Product data:**

<b>Product Type:</b>	Primary Antibodies
<b>Applications:</b>	WB
<b>Recommended Dilution:</b>	WB,1:500 - 1:2000
<b>Reactivity:</b>	Human, Mouse
<b>Modifications:</b>	Unmodified
<b>Host:</b>	Rabbit
<b>Isotype:</b>	IgG
<b>Clonality:</b>	Polyclonal
<b>Immunogen:</b>	Recombinant fusion protein containing a sequence corresponding to amino acids 1-244 of human C14orf166 (NP_057123.1).
<b>Formulation:</b>	Buffer: PBS with 0.02% sodium azide,50% glycerol,pH7.3.
<b>Concentration:</b>	lot specific
<b>Purification:</b>	Affinity purification
<b>Conjugation:</b>	Unconjugated
<b>Storage:</b>	Store at -20°C. Avoid freeze / thaw cycles.
<b>Stability:</b>	Shelf life: one year from despatch.
<b>Predicted Protein Size:</b>	28kDa
<b>Gene Name:</b>	chromosome 14 open reading frame 166
<b>Database Link:</b>	<a href="#">Entrez Gene 51637 Human Q9Y224</a>
<b>Background:</b>	RNA-binding protein involved in modulation of mRNA transcription by Polymerase II. Component of the tRNA-splicing ligase complex and is required for tRNA ligation. May be required for RNA transport.
<b>Synonyms:</b>	CGI-99; CGI99; CLE; CLE7; LCRP369; RLLM1

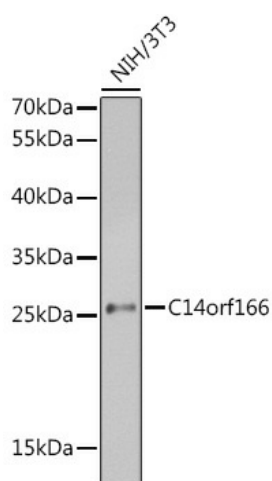


[View online »](#)

## Product images:



Western blot analysis of extracts of various cell lines, using C14orf166 antibody ([TA374124]) at 1:1000 dilution. | Secondary antibody: HRP Goat Anti-Rabbit IgG (H+L) at 1:10000 dilution. | Lysates/proteins: 25ug per lane. | Blocking buffer: 3% nonfat dry milk in TBST. | Detection: ECL Basic Kit . | Exposure time: 90s.



Western blot analysis of extracts of NIH/3T3 cells, using C14orf166 antibody ([TA374124]) at 1:1000 dilution. | Secondary antibody: HRP Goat Anti-Rabbit IgG (H+L) at 1:10000 dilution. | Lysates/proteins: 25ug per lane. | Blocking buffer: 3% nonfat dry milk in TBST. | Detection: ECL Enhanced Kit . | Exposure time: 45s.