

## Product datasheet for **TA374123S**

### **C12orf29 Rabbit Polyclonal Antibody**

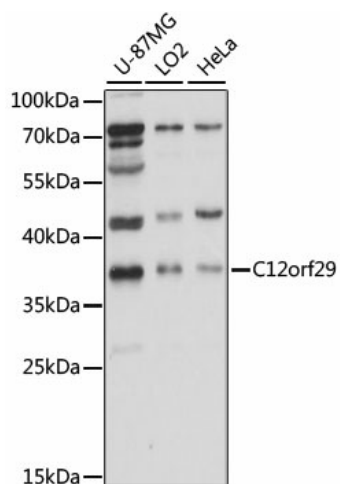
#### **Product data:**

Product Type:	Primary Antibodies
Applications:	WB
Recommended Dilution:	WB,1:500 - 1:2000
Reactivity:	Human, Mouse
Modifications:	Unmodified
Host:	Rabbit
Isotype:	IgG
Clonality:	Polyclonal
Immunogen:	Recombinant fusion protein containing a sequence corresponding to amino acids 1-325 of human C12orf29 (NP_001009894.2).
Formulation:	Buffer: PBS with 0.02% sodium azide,50% glycerol,pH7.3.
Concentration:	lot specific
Purification:	Affinity purification
Conjugation:	Unconjugated
Storage:	Store at -20°C. Avoid freeze / thaw cycles.
Stability:	Shelf life: one year from despatch.
Predicted Protein Size:	4kDa/34kDa/37kDa
Gene Name:	chromosome 12 open reading frame 29
Database Link:	<a href="#">Entrez Gene 91298 Human Q8N999</a>
Synonyms:	DKFZp313K0436; DKFZp434N2030; DKFZp686L04169; FLJ38158; MGC102978



[View online »](#)

## Product images:



Western blot analysis of extracts of various cell lines, using C12orf29 antibody ([TA374123]) at 1000 dilution. | Secondary antibody: HRP Goat Anti-Rabbit IgG (H+L) at 1:10000 dilution. | Lysates/proteins: 25ug per lane. | Blocking buffer: 3% nonfat dry milk in TBST. | Detection: ECL Basic Kit . | Exposure time: 10s.