

Product datasheet for TA374121S

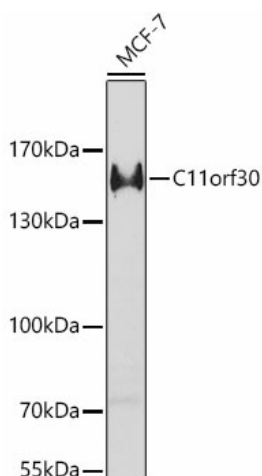
EMSY Rabbit Polyclonal Antibody

Product data:

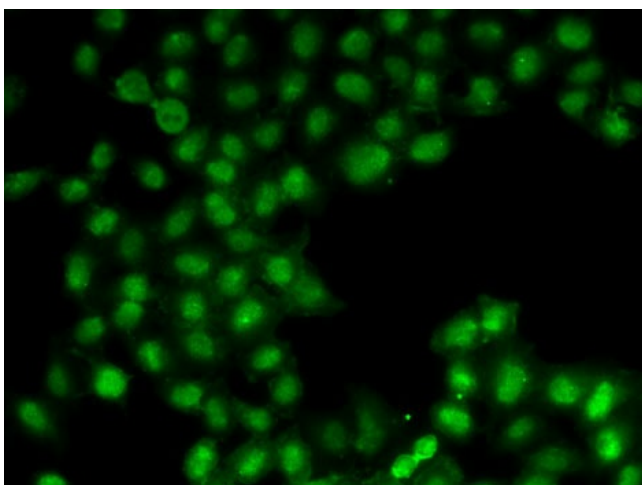
Product Type:	Primary Antibodies
Applications:	ELISA, ICC/IF, WB
Recommended Dilution:	WB, 1:500 - 1:1000 IF/ICC, 1:50 - 1:100 ELISA, Recommended starting concentration is 1 µg/mL. Please optimize the concentration based on your specific assay requirements.
Reactivity:	Human, Mouse
Modifications:	Unmodified
Host:	Rabbit
Isotype:	IgG
Clonality:	Polyclonal
Formulation:	Buffer: PBS with 0.02% sodium azide, 50% glycerol, pH 7.3.
Concentration:	lot specific
Purification:	Affinity purification
Conjugation:	Unconjugated
Storage:	Store at -20°C. Avoid freeze / thaw cycles.
Stability:	Shelf life: one year from despatch.
Predicted Protein Size:	141kDa
Gene Name:	EMSY, BRCA2 interacting transcriptional repressor
Database Link:	Entrez Gene 56946 Human Q7Z589
Background:	Predicted to enable identical protein binding activity. Predicted to be involved in DNA repair; chromatin organization; and regulation of transcription, DNA-templated. Located in nucleoplasm.


[View online »](#)

Product images:



Western blot analysis of lysates from MCF-7 cells



Immunofluorescence analysis of U2OS cells using C11orf30 Rabbit pAb ([TA374121]). Secondary antibody: Cy3-conjugated Goat anti-Rabbit IgG (H+L) (AS007) at 1:500 dilution.