

Product datasheet for **TA374119S**

BZW2 Rabbit Polyclonal Antibody

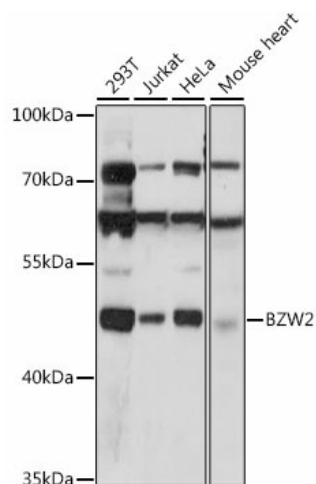
Product data:

Product Type:	Primary Antibodies
Applications:	ICC/IF, WB
Recommended Dilution:	WB,1:500 - 1:2000 IF,1:50 - 1:200
Reactivity:	Human, Mouse
Modifications:	Unmodified
Host:	Rabbit
Isotype:	IgG
Clonality:	Polyclonal
Immunogen:	Recombinant fusion protein containing a sequence corresponding to amino acids 190-300 of human BZW2 (NP_054757.1).
Formulation:	Buffer: PBS with 0.02% sodium azide,50% glycerol,pH7.3.
Concentration:	lot specific
Purification:	Affinity purification
Conjugation:	Unconjugated
Storage:	Store at -20°C. Avoid freeze / thaw cycles.
Stability:	Shelf life: one year from despatch.
Predicted Protein Size:	22kDa/48kDa
Gene Name:	basic leucine zipper and W2 domains 2
Database Link:	Entrez Gene 28969 Human Q9Y6E2
Background:	May be involved in neuronal differentiation.
Synonyms:	HSPC028; MST017; MSTP017

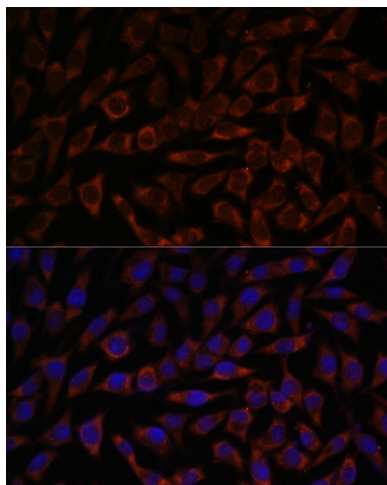


[View online »](#)

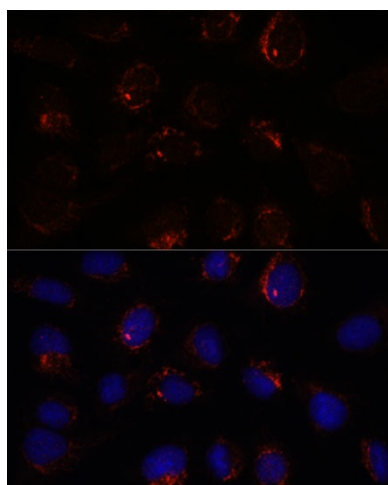
Product images:



Western blot analysis of extracts of various cell lines, using BZW2 antibody ([TA374119]) at 1:1000 dilution. | Secondary antibody: HRP Goat Anti-Rabbit IgG (H+L) at 1:10000 dilution. | Lysates/proteins: 25ug per lane. | Blocking buffer: 3% nonfat dry milk in TBST. | Detection: ECL Basic Kit . | Exposure time: 90s.



Immunofluorescence analysis of L929 cells using BZW2 antibody ([TA374119]) at dilution of 1:100. Blue: DAPI for nuclear staining.



Immunofluorescence analysis of U-2 OS cells using BZW2 antibody ([TA374119]) at dilution of 1:100. Blue: DAPI for nuclear staining.