

Product datasheet for **TA374118**

BZW1 Rabbit Polyclonal Antibody

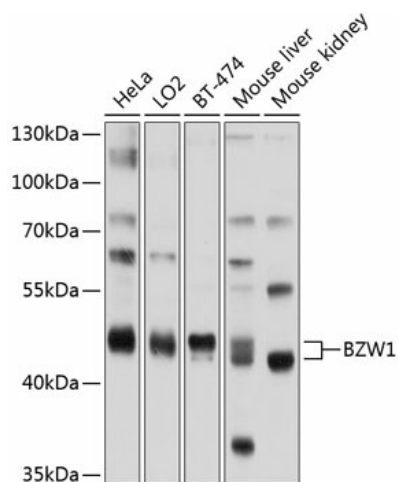
Product data:

Product Type:	Primary Antibodies
Applications:	WB
Recommended Dilution:	WB,1:500 - 1:2000
Reactivity:	Human, Mouse
Modifications:	Unmodified
Host:	Rabbit
Isotype:	IgG
Clonality:	Polyclonal
Immunogen:	Recombinant fusion protein containing a sequence corresponding to amino acids 1-290 of human BZW1 (NP_001193996.1).
Formulation:	Buffer: PBS with 0.02% sodium azide,50% glycerol,pH7.3.
Concentration:	lot specific
Purification:	Affinity purification
Conjugation:	Unconjugated
Storage:	Store at -20°C. Avoid freeze / thaw cycles.
Stability:	Shelf life: one year from despatch.
Predicted Protein Size:	40kDa/48kDa/51kDa
Gene Name:	basic leucine zipper and W2 domains 1
Database Link:	Entrez Gene 9689 Human Q7L1Q6
Background:	Enhances histone H4 gene transcription but does not seem to bind DNA directly.
Synonyms:	BZAP45; KIAA0005; Nbla10236



[View online »](#)

Product images:



Western blot analysis of extracts of various cell lines, using BZW1 antibody (TA374118) at 1:1000 dilution. | Secondary antibody: HRP Goat Anti-Rabbit IgG (H+L) at 1:10000 dilution. | Lysates/proteins: 25ug per lane. | Blocking buffer: 3% nonfat dry milk in TBST. | Detection: ECL Basic Kit . | Exposure time: 1s.