

Product datasheet for **TA374100S**

Btbd11 Rabbit Polyclonal Antibody

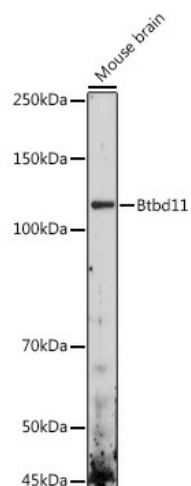
Product data:

Product Type:	Primary Antibodies
Applications:	ELISA, WB
Recommended Dilution:	WB, 1:500 - 1:1000 ELISA, Recommended starting concentration is 1 µg/mL. Please optimize the concentration based on your specific assay requirements.
Reactivity:	Human, Mouse, Rat
Modifications:	Unmodified
Host:	Rabbit
Isotype:	IgG
Clonality:	Polyclonal
Formulation:	Buffer: PBS with 0.02% sodium azide, 50% glycerol, pH 7.3.
Concentration:	lot specific
Purification:	Affinity purification
Conjugation:	Unconjugated
Storage:	Store at -20°C. Avoid freeze / thaw cycles.
Stability:	Shelf life: one year from despatch.
Predicted Protein Size:	122kDa
Gene Name:	BTB (POZ) domain containing 11
Database Link:	Entrez Gene 74007 Mouse Q6GQW0
Background:	Predicted to enable protein heterodimerization activity. Acts upstream of or within SMAD protein signal transduction. Predicted to be located in membrane. Predicted to be integral component of membrane. Is expressed in central nervous system; dorsal root ganglion; genitourinary system; and thymus primordium. Orthologous to human BTBD11 (BTB domain containing 11).
Synonyms:	FLJ33957; FLJ42845



[View online »](#)

Product images:



Western blot analysis of lysates from Mouse brain