

Product datasheet for **TA374087**

Peregrin (BRPF1) Rabbit Polyclonal Antibody

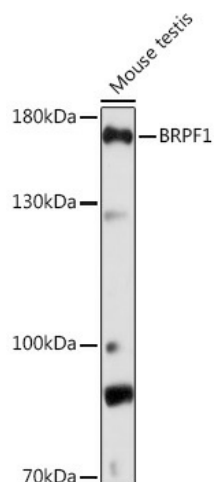
Product data:

Product Type:	Primary Antibodies
Applications:	ICC/IF, WB
Recommended Dilution:	WB, 1:500 - 1:2000 IF, 1:50 - 1:200
Reactivity:	Human, Mouse, Rat
Host:	Rabbit
Isotype:	IgG
Clonality:	Polyclonal
Immunogen:	Recombinant fusion protein containing a sequence corresponding to amino acids 1-200 of human BRPF1 (NP_001003694).
Formulation:	Buffer: PBS with 0.02% sodium azide, 50% glycerol, pH 7.3.
Concentration:	lot specific
Purification:	Affinity purification
Conjugation:	Unconjugated
Storage:	Store at -20°C. Avoid freeze / thaw cycles.
Stability:	Shelf life: one year from despatch.
Gene Name:	bromodomain and PHD finger containing 1
Database Link:	Entrez Gene 7862 Human P55201
Background:	This gene encodes a bromodomain, PHD finger and chromo/Tudor-related Pro-Trp-Trp-Pro (PWWP) domain containing protein. The encoded protein is a component of the MOZ/MORF histone acetyltransferase complexes which function as transcriptional regulators. This protein binds to the catalytic MYST domains of the MOZ and MORF proteins and may play a role in stimulating acetyltransferase and transcriptional activity of the complex. Alternative splicing results in multiple transcript variants.
Synonyms:	BR140; OTTHUMP00000207279; peregrin

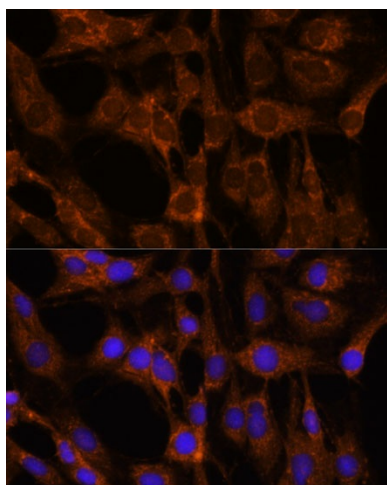


[View online »](#)

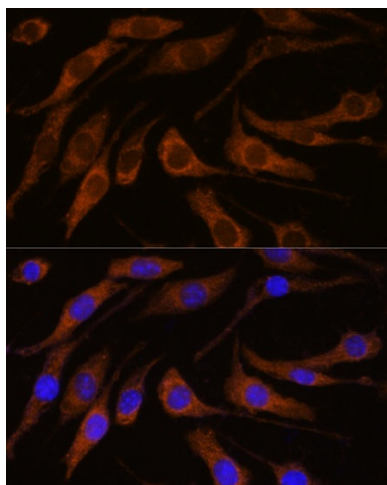
Product images:



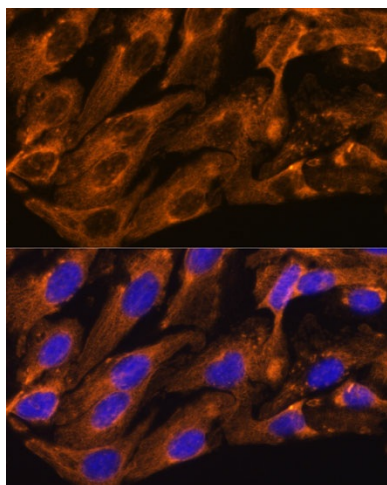
Western blot analysis of extracts of Mouse testis, using BRPF1 Rabbit pAb (TA374087) at 1:1000 dilution. | Secondary antibody: HRP Goat Anti-Rabbit IgG (H+L) at 1:10000 dilution. | Lysates/proteins: 25ug per lane. | Blocking buffer: 3% nonfat dry milk in TBST. | Detection: ECL Basic Kit . | Exposure time: 90s.



Immunofluorescence analysis of C6 cells using BRPF1 antibody (TA374087) at dilution of 1:100. Blue: DAPI for nuclear staining.



Immunofluorescence analysis of L929 cells using BRPF1 antibody (TA374087) at dilution of 1:100. Blue: DAPI for nuclear staining.



Immunofluorescence analysis of U-2 OS cells using BRPF1 antibody (TA374087) at dilution of 1:100. Blue: DAPI for nuclear staining.