

Product datasheet for **TA374062**

BRCA1 Rabbit Polyclonal Antibody

Product data:

Product Type:	Primary Antibodies
Applications:	ICC/IF, WB
Recommended Dilution:	WB,1:500 - 1:2000 IF,1:50 - 1:200
Reactivity:	Human, Mouse, Rat
Modifications:	Unmodified
Host:	Rabbit
Isotype:	IgG
Clonality:	Polyclonal
Immunogen:	Recombinant fusion protein containing a sequence corresponding to amino acids 400-699 of human BRCA1 (NP_009230.2).
Formulation:	Buffer: PBS with 0.02% sodium azide,50% glycerol,pH7.3.
Concentration:	lot specific
Purification:	Affinity purification
Conjugation:	Unconjugated
Storage:	Store at -20°C. Avoid freeze / thaw cycles.
Stability:	Shelf life: one year from despatch.
Predicted Protein Size:	7kDa/78-85kDa/202-210kDa
Gene Name:	BRCA1, DNA repair associated
Database Link:	Entrez Gene 672 Human P38398



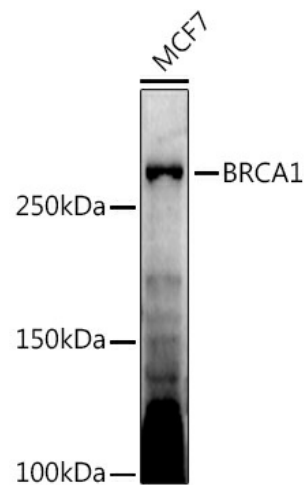
[View online »](#)

Background:

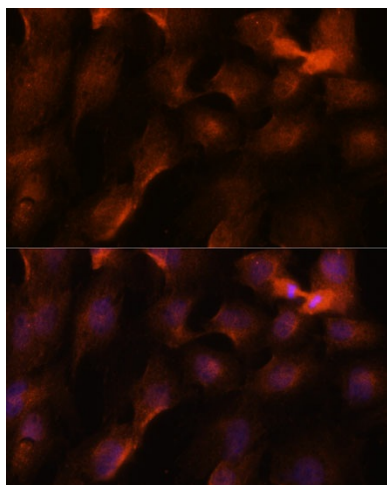
This gene encodes a nuclear phosphoprotein that plays a role in maintaining genomic stability, and it also acts as a tumor suppressor. The encoded protein combines with other tumor suppressors, DNA damage sensors, and signal transducers to form a large multi-subunit protein complex known as the BRCA1-associated genome surveillance complex (BASC). This gene product associates with RNA polymerase II, and through the C-terminal domain, also interacts with histone deacetylase complexes. This protein thus plays a role in transcription, DNA repair of double-stranded breaks, and recombination. Mutations in this gene are responsible for approximately 40% of inherited breast cancers and more than 80% of inherited breast and ovarian cancers. Alternative splicing plays a role in modulating the subcellular localization and physiological function of this gene. Many alternatively spliced transcript variants, some of which are disease-associated mutations, have been described for this gene, but the full-length nature of only some of these variants has been described. A related pseudogene, which is also located on chromosome 17, has been identified.

Synonyms:

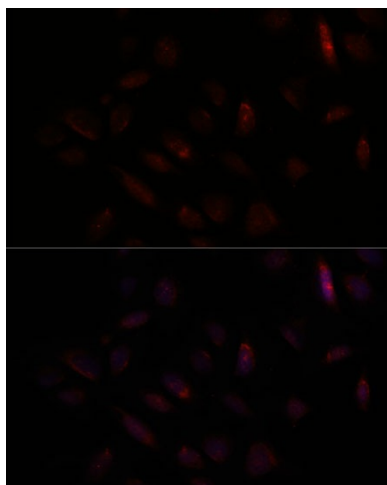
BRCA1; BRCC1; BROVCA1; IRIS; PSCP; RNF53

Product images:

Western blot analysis of extracts of MCF7 cells, using (TA374062) at 1:500 dilution. | Secondary antibody: HRP Goat Anti-Rabbit IgG (H+L) at 1:10000 dilution. | Lysates/proteins: 25ug per lane. | Blocking buffer: 3% nonfat dry milk in TBST. | Detection: ECL Enhanced Kit . | Exposure time: 90s.



Immunofluorescence analysis of C6 cells using BRCA1 antibody (TA374062) at dilution of 1:100. Blue: DAPI for nuclear staining.



Immunofluorescence analysis of U-2 OS cells using BRCA1 antibody (TA374062) at dilution of 1:100. Blue: DAPI for nuclear staining.