

## Product datasheet for **TA374049S**

### **BOLA3 Rabbit Polyclonal Antibody**

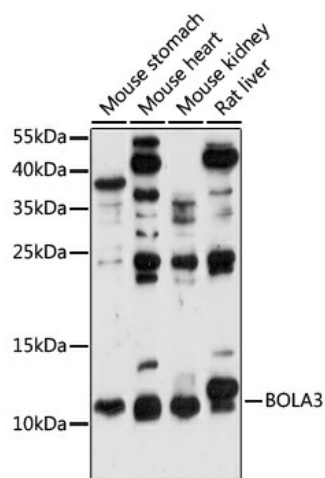
#### **Product data:**

Product Type:	Primary Antibodies
Applications:	ELISA, IHC, WB
Recommended Dilution:	WB, 1:500 - 1:2000 IHC-P, 1:50 - 1:200 ELISA, Recommended starting concentration is 1 µg/mL. Please optimize the concentration based on your specific assay requirements.
Reactivity:	Human, Mouse, Rat
Modifications:	Unmodified
Host:	Rabbit
Isotype:	IgG
Clonality:	Polyclonal
Formulation:	Buffer: PBS with 0.02% sodium azide, 50% glycerol, pH 7.3.
Concentration:	lot specific
Purification:	Affinity purification
Conjugation:	Unconjugated
Storage:	Store at -20°C. Avoid freeze / thaw cycles.
Stability:	Shelf life: one year from despatch.
Predicted Protein Size:	12kDa
Gene Name:	bolA family member 3
Database Link:	<a href="#">Entrez Gene 388962 Human Q53S33</a>
Background:	This gene encodes a protein that plays an essential role in the production of iron-sulfur (Fe-S) clusters for the normal maturation of lipoate-containing 2-oxoacid dehydrogenases, and for the assembly of the mitochondrial respiratory chain complexes. Mutation in this gene has been associated with multiple mitochondrial dysfunctions syndrome-2. Two alternatively spliced transcript variants encoding different isoforms with distinct subcellular localization have been reported for this gene (PMID:21944046).
Synonyms:	BOLA3



[View online »](#)

## Product images:



Western blot analysis of various lysates using BOLA3 Rabbit pAb (TA374049) at 1:1000 dilution.

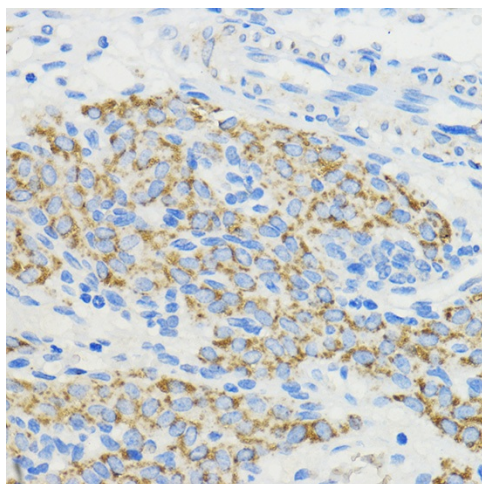
Secondary antibody: HRP-conjugated Goat anti-Rabbit IgG (H+L) (AS014) at 1:10000 dilution.

Lysates/proteins: 25µg per lane.

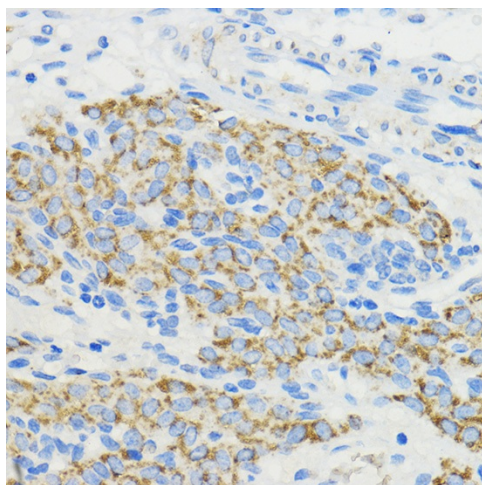
Blocking buffer: 3% nonfat dry milk in TBST.

Detection: ECL Enhanced Kit (RM00021).

Exposure time: 90s.



Immunohistochemistry analysis of paraffin-embedded Human oophoroma using BOLA3 Rabbit pAb (TA374049) at dilution of 1:50 (40x lens). Microwave antigen retrieval performed with 0.01M PBS Buffer (pH 7.2) prior to IHC staining.



Immunohistochemistry analysis of paraffin-embedded Rat ovary using BOLA3 Rabbit pAb ([TA374049]) at dilution of 1:50 (40x lens). Microwave antigen retrieval performed with 0.01M PBS Buffer (pH 7.2) prior to IHC staining.