

## Product datasheet for **TA374049**

### **BOLA3 Rabbit Polyclonal Antibody**

#### **Product data:**

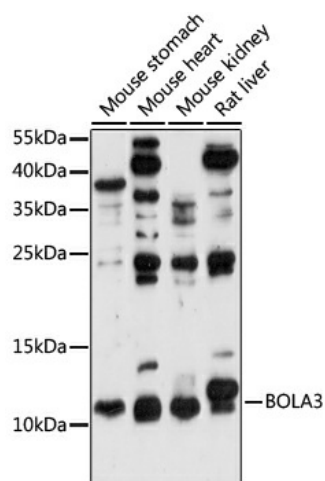
<b>Product Type:</b>	Primary Antibodies
<b>Applications:</b>	IHC, WB
<b>Recommended Dilution:</b>	WB,1:500 - 1:2000 IHC,1:50 - 1:200
<b>Reactivity:</b>	Human, Mouse, Rat
<b>Modifications:</b>	Unmodified
<b>Host:</b>	Rabbit
<b>Isotype:</b>	IgG
<b>Clonality:</b>	Polyclonal
<b>Immunogen:</b>	Recombinant fusion protein containing a sequence corresponding to amino acids 1-68 of human BOLA3 (NP_997717.2).
<b>Formulation:</b>	Buffer: PBS with 0.02% sodium azide,50% glycerol,pH7.3.
<b>Concentration:</b>	lot specific
<b>Purification:</b>	Affinity purification
<b>Conjugation:</b>	Unconjugated
<b>Storage:</b>	Store at -20°C. Avoid freeze / thaw cycles.
<b>Stability:</b>	Shelf life: one year from despatch.
<b>Predicted Protein Size:</b>	11kDa/12kDa
<b>Gene Name:</b>	bolA family member 3
<b>Database Link:</b>	<a href="#">Entrez Gene 388962 Human Q53S33</a>
<b>Background:</b>	This gene encodes a protein that plays an essential role in the production of iron-sulfur (Fe-S) clusters for the normal maturation of lipoate-containing 2-oxoacid dehydrogenases, and for the assembly of the mitochondrial respiratory chain complexes. Mutation in this gene has been associated with multiple mitochondrial dysfunctions syndrome-2. Two alternatively spliced transcript variants encoding different isoforms with distinct subcellular localization have been reported for this gene (PMID:21944046).



[View online »](#)

Synonyms: BOLA3

### Product images:



Western blot analysis of extracts of various cell lines, using BOLA3 antibody (TA374049) at 1:1000 dilution. | Secondary antibody: HRP Goat Anti-Rabbit IgG (H+L) at 1:10000 dilution. | Lysates/proteins: 25ug per lane. | Blocking buffer: 3% nonfat dry milk in TBST. | Detection: ECL Enhanced Kit. | Exposure time: 90s.