

## Product datasheet for **TA374040S**

### **BMS1L (BMS1) Rabbit Polyclonal Antibody**

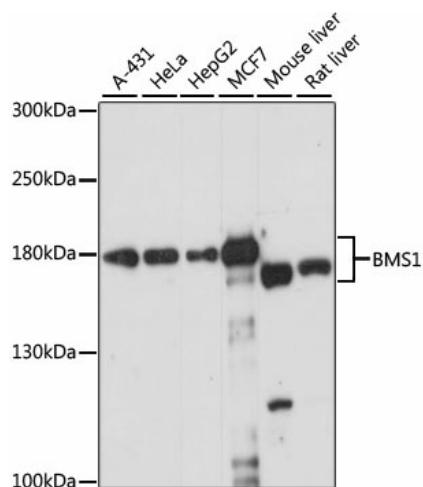
#### **Product data:**

<b>Product Type:</b>	Primary Antibodies
<b>Applications:</b>	ELISA, WB
<b>Recommended Dilution:</b>	WB, 1:200 – 1:2000 ELISA, Recommended starting concentration is 1 µg/mL. Please optimize the concentration based on your specific assay requirements.
<b>Reactivity:</b>	Human, Mouse, Rat
<b>Modifications:</b>	Unmodified
<b>Host:</b>	Rabbit
<b>Isotype:</b>	IgG
<b>Clonality:</b>	Polyclonal
<b>Formulation:</b>	Buffer: PBS with 0.02% sodium azide, 50% glycerol, pH 7.3.
<b>Concentration:</b>	lot specific
<b>Purification:</b>	Affinity purification
<b>Conjugation:</b>	Unconjugated
<b>Storage:</b>	Store at -20°C. Avoid freeze / thaw cycles.
<b>Stability:</b>	Shelf life: one year from despatch.
<b>Predicted Protein Size:</b>	146kDa
<b>Gene Name:</b>	BMS1, ribosome biogenesis factor
<b>Database Link:</b>	<a href="#">Entrez Gene 9790 Human Q14692</a>
<b>Background:</b>	This gene likely encodes a ribosome assembly protein. A similar protein in yeast functions in 35S-rRNA processing, which includes a series of cleavage steps critical for formation of 40S ribosomes. Related pseudogenes exist on chromosomes 2, 9, 10, 15, 16, and 22.



Synonyms: BMS1L; KIAA0187

### Product images:



Western blot analysis of various lysates using BMS1 Rabbit pAb ([TA374040]) at 1:1000 dilution.

Secondary antibody: HRP-conjugated Goat anti-Rabbit IgG (H+L) at 1:10000 dilution.

Lysates/proteins: 25µg per lane.

Blocking buffer: 3% nonfat dry milk in TBST.

Detection: ECL Enhanced Kit .

Exposure time: 15s.