

Product datasheet for **TA374026S**

BMP15 Rabbit Polyclonal Antibody

Product data:

Product Type:	Primary Antibodies
Applications:	ICC/IF, WB
Recommended Dilution:	WB,1:500 - 1:2000 IF,1:50 - 1:100
Reactivity:	Human, Mouse, Rat
Modifications:	Unmodified
Host:	Rabbit
Isotype:	IgG
Clonality:	Polyclonal
Immunogen:	Recombinant fusion protein containing a sequence corresponding to amino acids 143-392 of human BMP15 (NP_005439.2).
Formulation:	Buffer: PBS with 0.02% sodium azide,50% glycerol,pH7.3.
Concentration:	lot specific
Purification:	Affinity purification
Conjugation:	Unconjugated
Storage:	Store at -20°C. Avoid freeze / thaw cycles.
Stability:	Shelf life: one year from despatch.
Predicted Protein Size:	45kDa
Gene Name:	bone morphogenetic protein 15
Database Link:	Entrez Gene 9210 Human O95972



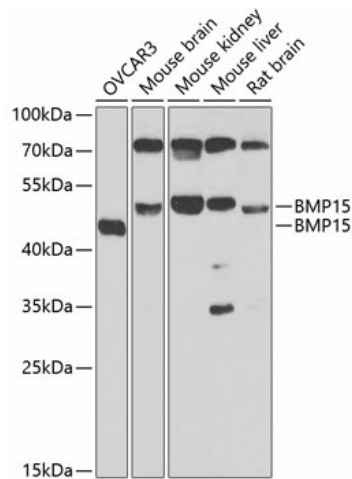
[View online »](#)

Background:

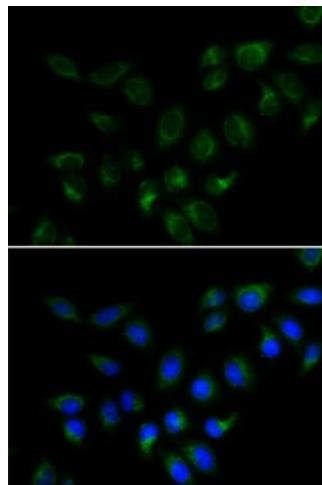
This gene encodes a secreted ligand of the TGF-beta (transforming growth factor-beta) superfamily of proteins. Ligands of this family bind various TGF-beta receptors leading to recruitment and activation of SMAD family transcription factors that regulate gene expression. The encoded preproprotein is proteolytically processed to generate subunits of a disulfide-linked homodimer, or alternatively, a heterodimer, with the related protein, growth differentiation factor 9 (GDF9). This protein plays a role in oocyte maturation and follicular development, through activation of granulosa cells. Defects in this gene are the cause of ovarian dysgenesis and are associated with premature ovarian failure.

Synonyms:

BMP-15; GDF-9B; GDF9B; ODG2; POF4

Product images:


Western blot analysis of extracts of various cell lines, using BMP15 antibody ([TA374026]) at 1:1000 dilution. Secondary antibody: HRP Goat Anti-Rabbit IgG (H+L) at 1:10000 dilution. Lysates/proteins: 25ug per lane. Blocking buffer: 3% nonfat dry milk in TBST. Detection: ECL Enhanced Kit. Exposure time: 30s.



Immunofluorescence analysis of MCF7 cells using BMP15 antibody ([TA374026]). Blue: DAPI for nuclear staining.