

Product datasheet for **TA374022S**

BLZF1 Rabbit Polyclonal Antibody

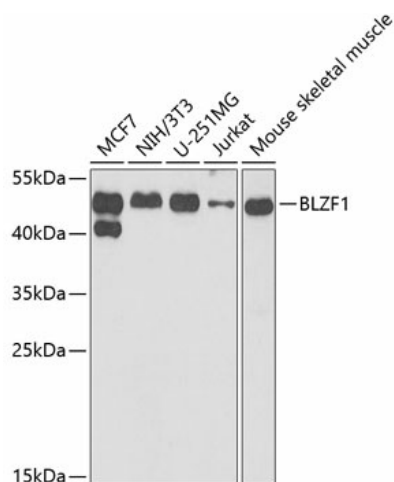
Product data:

Product Type:	Primary Antibodies
Applications:	ELISA, ICC/IF, WB
Recommended Dilution:	WB, 1:500 - 1:2000 IF/ICC, 1:50 - 1:200 ELISA, Recommended starting concentration is 1 µg/mL. Please optimize the concentration based on your specific assay requirements.
Reactivity:	Human, Mouse
Modifications:	Unmodified
Host:	Rabbit
Isotype:	IgG
Clonality:	Polyclonal
Formulation:	Buffer: PBS with 0.02% sodium azide, 50% glycerol, pH 7.3.
Concentration:	lot specific
Purification:	Affinity purification
Conjugation:	Unconjugated
Storage:	Store at -20°C. Avoid freeze / thaw cycles.
Stability:	Shelf life: one year from despatch.
Predicted Protein Size:	45kDa
Gene Name:	basic leucine zipper nuclear factor 1
Database Link:	Entrez Gene 8548 Human Q9H2G9
Background:	Enables ubiquitin protein ligase binding activity. Acts upstream of or within Golgi organization and Golgi to plasma membrane protein transport. Located in Golgi apparatus and nucleoplasm. Biomarker of hepatocellular carcinoma.
Synonyms:	GOLGIN-45; JEM-1; JEM-1s; JEM1; MGC22497

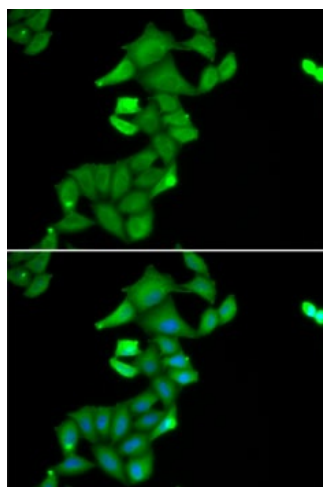


[View online »](#)

Product images:



Western blot analysis of various lysates using BLZF1 Rabbit pAb ([TA374022]) at 1:1000 dilution. Secondary antibody: HRP-conjugated Goat anti-Rabbit IgG (H+L) (AS014) at 1:10000 dilution. Lysates/proteins: 25µg per lane. Blocking buffer: 3% nonfat dry milk in TBST. Detection: ECL Basic Kit (RM00020). Exposure time: 90s.



Immunofluorescence analysis of U2OS cells using BLZF1 Rabbit pAb ([TA374022]). Secondary antibody: Cy3-conjugated Goat anti-Rabbit IgG (H+L) (AS007) at 1:500 dilution. Blue: DAPI for nuclear staining.