

Product datasheet for **TA374022**

BLZF1 Rabbit Polyclonal Antibody

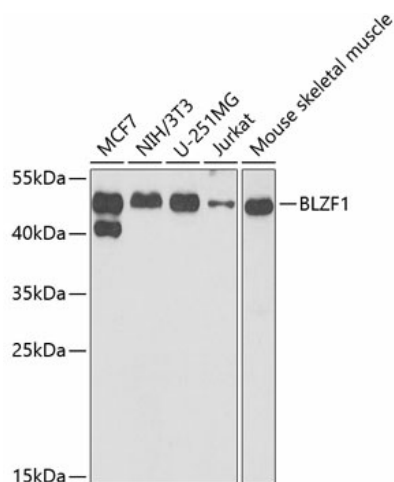
Product data:

Product Type:	Primary Antibodies
Applications:	ICC/IF, WB
Recommended Dilution:	WB,1:500 - 1:2000 IF,1:50 - 1:200
Reactivity:	Human, Mouse
Modifications:	Unmodified
Host:	Rabbit
Isotype:	IgG
Clonality:	Polyclonal
Immunogen:	Recombinant fusion protein containing a sequence corresponding to amino acids 1-400 of human BLZF1 (NP_003657.1).
Formulation:	Buffer: PBS with 0.02% sodium azide,50% glycerol,pH7.3.
Concentration:	lot specific
Purification:	Affinity purification
Conjugation:	Unconjugated
Storage:	Store at -20°C. Avoid freeze / thaw cycles.
Stability:	Shelf life: one year from despatch.
Predicted Protein Size:	19kDa/44kDa
Gene Name:	basic leucine zipper nuclear factor 1
Database Link:	Entrez Gene 8548 Human Q9H2G9
Background:	Required for normal Golgi structure and for protein transport from the endoplasmic reticulum (ER through the Golgi apparatus to the cell surface.
Synonyms:	GOLGIN-45; JEM-1; JEM-1s; JEM1; MGC22497

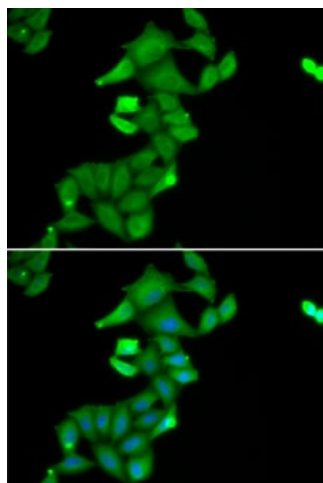


[View online »](#)

Product images:



Western blot analysis of extracts of various cell lines, using BLZF1 antibody (TA374022) at 1:1000 dilution. | Secondary antibody: HRP Goat Anti-Rabbit IgG (H+L) at 1:10000 dilution. | Lysates/proteins: 25ug per lane. | Blocking buffer: 3% nonfat dry milk in TBST. | Detection: ECL Basic Kit. | Exposure time: 90s.



Immunofluorescence analysis of U2OS cells using BLZF1 antibody (TA374022). Blue: DAPI for nuclear staining.