

Product datasheet for **TA373975S**

Bcl9 Rabbit Polyclonal Antibody

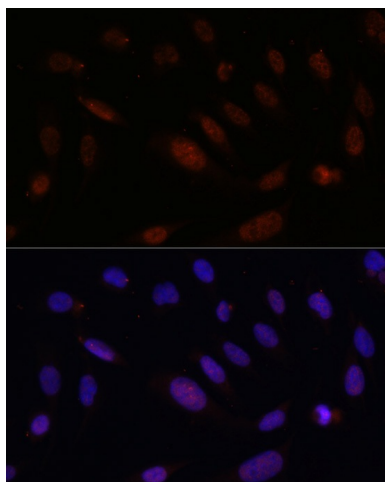
Product data:

Product Type:	Primary Antibodies
Applications:	ELISA, ICC/IF, IHC, WB
Recommended Dilution:	WB, 1:500 - 1:2000 IHC-P, 1:50 - 1:200 IF/ICC, 1:50 - 1:200 ELISA, Recommended starting concentration is 1 µg/mL. Please optimize the concentration based on your specific assay requirements.
Reactivity:	Human, Mouse, Rat
Host:	Rabbit
Isotype:	IgG
Clonality:	Polyclonal
Formulation:	Buffer: PBS with 0.02% sodium azide, 50% glycerol, pH 7.3.
Concentration:	lot specific
Purification:	Affinity purification
Conjugation:	Unconjugated
Storage:	Store at -20°C. Avoid freeze / thaw cycles.
Stability:	Shelf life: one year from despatch.
Predicted Protein Size:	149kDa
Gene Name:	B cell CLL/lymphoma 9
Database Link:	Entrez Gene 77578 Mouse Q9D219
Background:	Enables beta-catenin binding activity. Acts upstream of or within several processes, including myotube differentiation involved in skeletal muscle regeneration; skeletal muscle cell differentiation; and somatic stem cell population maintenance. Located in cis-Golgi network and nucleus. Is expressed in several structures, including brain; eye; head surface ectoderm; metanephros; and thymus primordium. Orthologous to human BCL9 (BCL9 transcription coactivator).
Synonyms:	Bcl-9; LGS; MGC131591



[View online »](#)

Product images:



Immunofluorescence analysis of U2OS cells using Bcl9 Rabbit pAb ([TA373975]) at dilution of 100 (40x lens). Secondary antibody: Cy3-conjugated Goat anti-Rabbit IgG (H+L) (AS007) at 1:500 dilution. Blue: DAPI for nuclear staining.