

Product datasheet for **TA373975**

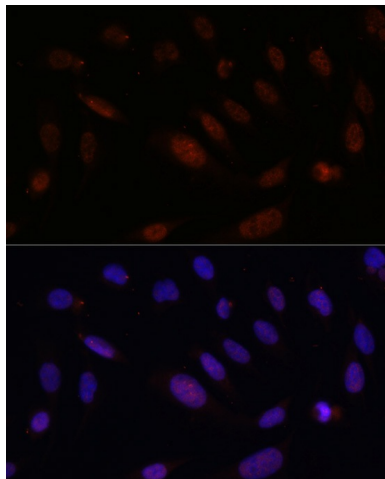
Bcl9 Rabbit Polyclonal Antibody

Product data:

Product Type:	Primary Antibodies
Applications:	ICC/IF, IHC, WB
Recommended Dilution:	WB,1:500 - 1:2000 IHC,1:50 - 1:200 IF,1:50 - 1:200
Reactivity:	Human, Mouse, Rat
Host:	Rabbit
Isotype:	IgG
Clonality:	Polyclonal
Immunogen:	Recombinant protein of mouse Bcl9.
Formulation:	Buffer: PBS with 0.02% sodium azide,50% glycerol,pH7.3.
Concentration:	lot specific
Purification:	Affinity purification
Conjugation:	Unconjugated
Storage:	Store at -20°C. Avoid freeze / thaw cycles.
Stability:	Shelf life: one year from despatch.
Predicted Protein Size:	148kDa
Gene Name:	B cell CLL/lymphoma 9
Database Link:	Entrez Gene 77578 Mouse Q9D219
Background:	BCL9 is associated with B-cell acute lymphoblastic leukemia. It may be a target of translocation in B-cell malignancies with abnormalities of 1q21. Its function is unknown. The overexpression of BCL9 may be of pathogenic significance in B-cell malignancies.
Synonyms:	Bcl-9; LGS; MGC131591



[View online »](#)

Product images:

Immunofluorescence analysis of U2OS cells using Bcl9 Rabbit pAb (TA373975) at dilution of 100 (40x lens). Blue: DAPI for nuclear staining.