

## Product datasheet for **TA373973S**

### **BCL3 Rabbit Polyclonal Antibody**

#### **Product data:**

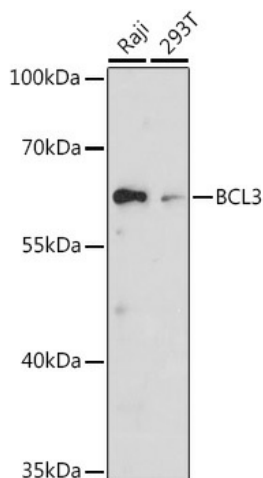
|                                |   |
|--------------------------------|---|
| <b>Product Type:</b>           | Primary Antibodies  |
| <b>Applications:</b>           | ICC/IF, WB  |
| <b>Recommended Dilution:</b>   | WB, 1:500 - 1:2000<br>IF, 1:50 - 1:200  |
| <b>Reactivity:</b>             | Human, Mouse, Rat   |
| <b>Modifications:</b>          | Unmodified  |
| <b>Host:</b>                   | Rabbit  |
| <b>Isotype:</b>                | IgG   |
| <b>Clonality:</b>              | Polyclonal  |
| <b>Immunogen:</b>              | A synthetic peptide corresponding to a sequence within amino acids 300-400 of human BCL3 (NP_005169.2).   |
| <b>Formulation:</b>            | Buffer: PBS with 0.02% sodium azide, 50% glycerol, pH 7.3.  |
| <b>Concentration:</b>          | lot specific  |
| <b>Purification:</b>           | Affinity purification   |
| <b>Conjugation:</b>            | Unconjugated  |
| <b>Storage:</b>                | Store at -20°C. Avoid freeze / thaw cycles.   |
| <b>Stability:</b>              | Shelf life: one year from despatch.   |
| <b>Predicted Protein Size:</b> | 47kDa   |
| <b>Gene Name:</b>              | B-cell CLL/lymphoma 3   |
| <b>Database Link:</b>          | <a href="#">Entrez Gene 602 Human P20749</a>  |
| <b>Background:</b>             | This gene is a proto-oncogene candidate. It is identified by its translocation into the immunoglobulin alpha-locus in some cases of B-cell leukemia. The protein encoded by this gene contains seven ankyrin repeats, which are most closely related to those found in I kappa B proteins. This protein functions as a transcriptional co-activator that activates through its association with NF-kappa B homodimers. The expression of this gene can be induced by NF-kappa B, which forms a part of the autoregulatory loop that controls the nuclear residence of p50 NF-kappa B. |



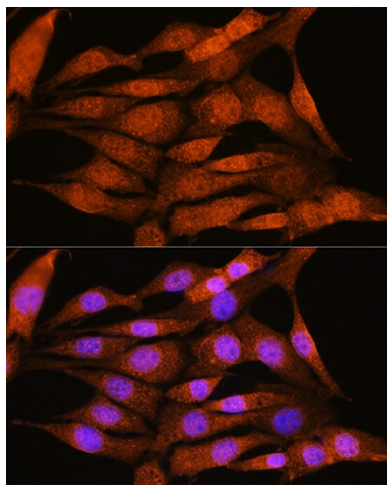
[View online »](#)

Synonyms: BCL4; D19S37

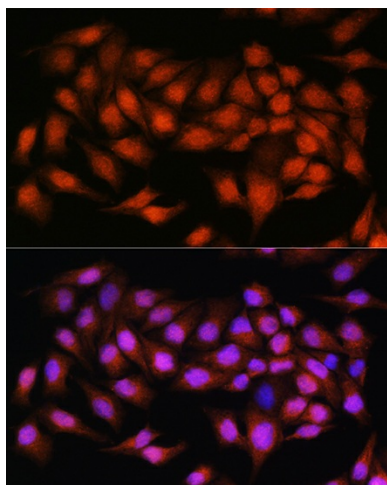
### Product images:



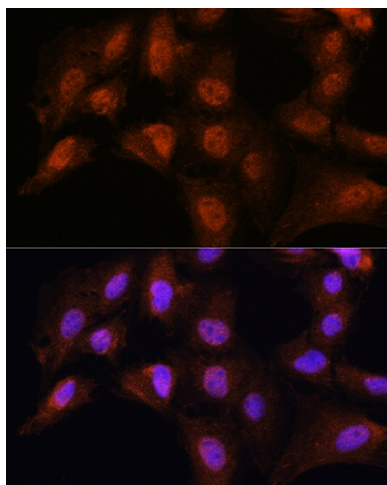
Western blot analysis of extracts of various cell lines, using BCL3 antibody ([TA373973]) at 1:1000 dilution. | Secondary antibody: HRP Goat Anti-Rabbit IgG (H+L) at 1:10000 dilution. | Lysates/proteins: 25ug per lane. | Blocking buffer: 3% nonfat dry milk in TBST. | Detection: ECL Basic Kit . | Exposure time: 30s.



Immunofluorescence analysis of NIH/3T3 cells using BCL3 Rabbit pAb ([TA373973]) at dilution of 1:100. Blue: DAPI for nuclear staining.



Immunofluorescence analysis of HeLa cells using BCL3 Rabbit pAb ([TA373973]) at dilution of 1:100. Blue: DAPI for nuclear staining.



Immunofluorescence analysis of C6 cells using BCL3 Rabbit pAb ([TA373973]) at dilution of 1:100. Blue: DAPI for nuclear staining.