

Product datasheet for **TA373961S**

BCDIN3D Rabbit Polyclonal Antibody

Product data:

Product Type:	Primary Antibodies
Applications:	ELISA, WB
Recommended Dilution:	WB, 1:500 - 1:2000 ELISA, Recommended starting concentration is 1 µg/mL. Please optimize the concentration based on your specific assay requirements.
Reactivity:	Human, Mouse
Modifications:	Unmodified
Host:	Rabbit
Isotype:	IgG
Clonality:	Polyclonal
Formulation:	Buffer: PBS with 0.02% sodium azide, 50% glycerol, pH 7.3.
Concentration:	lot specific
Purification:	Affinity purification
Conjugation:	Unconjugated
Storage:	Store at -20°C. Avoid freeze / thaw cycles.
Stability:	Shelf life: one year from despatch.
Predicted Protein Size:	33kDa
Gene Name:	BCDIN3 domain containing RNA methyltransferase
Database Link:	Entrez Gene 144233 Human Q7Z5W3



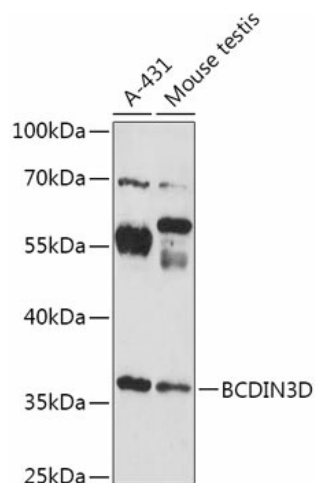
[View online »](#)

Background:

This gene encodes an RNA methyltransferase which belongs to the rossmann fold methyltransferase family, and serves as a 5'-methylphosphate capping enzyme that is specific for cytoplasmic histidyl tRNA. The encoded protein contains an S-adenosylmethionine binding domain and uses the methyl group donor, S-adenosylmethionine. This gene is overexpressed in breast cancer cells, and is related to the tumorigenic phenotype and poor prognosis of breast cancer. The encoded protein is thought to promote the cellular invasion of breast cancer cells, by downregulating the expression of tumor suppressor miRNAs through the dimethylation of the 5-monophosphate of the corresponding precursor miRNAs.

Synonyms:

BCDIN3D

Product images:


Western blot analysis of various lysates using BCDIN3D Rabbit pAb (TA373961S) at 1:1000 dilution.

Secondary antibody: HRP-conjugated Goat anti-Rabbit IgG (H+L) (AS014) at 1:10000 dilution.

Lysates/proteins: 25µg per lane.

Blocking buffer: 3% nonfat dry milk in TBST.

Detection: ECL Enhanced Kit (RM00021).

Exposure time: 180s.