

Product datasheet for **TA373957S**

BCAS3 Rabbit Polyclonal Antibody

Product data:

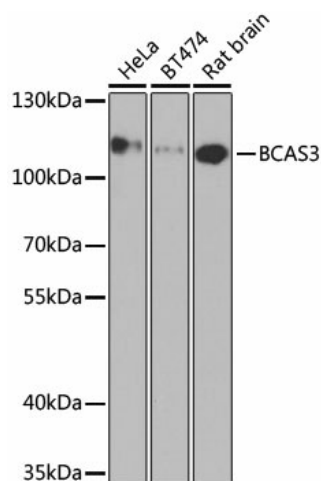
Product Type:	Primary Antibodies
Applications:	ELISA, ICC/IF, IHC, IP, WB
Recommended Dilution:	WB, 1:500 - 1:2000 IHC-P, 1:50 - 1:200 IF/ICC, 1:50 - 1:200 IP, 0.5µg-4µg antibody for 200µg-400µg extracts of whole cells ELISA, Recommended starting concentration is 1 µg/mL. Please optimize the concentration based on your specific assay requirements.
Reactivity:	Human, Mouse, Rat
Modifications:	Unmodified
Host:	Rabbit
Isotype:	IgG
Clonality:	Polyclonal
Formulation:	Buffer: PBS with 0.02% sodium azide, 50% glycerol, pH 7.3.
Concentration:	lot specific
Purification:	Affinity purification
Conjugation:	Unconjugated
Storage:	Store at -20°C. Avoid freeze / thaw cycles.
Stability:	Shelf life: one year from despatch.
Predicted Protein Size:	101kDa
Gene Name:	breast carcinoma amplified sequence 3
Database Link:	Entrez Gene 54828 Human Q9H6U6
Background:	Enables several functions, including acetyltransferase activator activity; beta-tubulin binding activity; and histone acetyltransferase binding activity. Involved in cellular response to estrogen stimulus; positive regulation of catalytic activity; and positive regulation of transcription by RNA polymerase II. Located in nucleus; phagophore assembly site; and transcriptionally active chromatin. Biomarker of breast cancer.



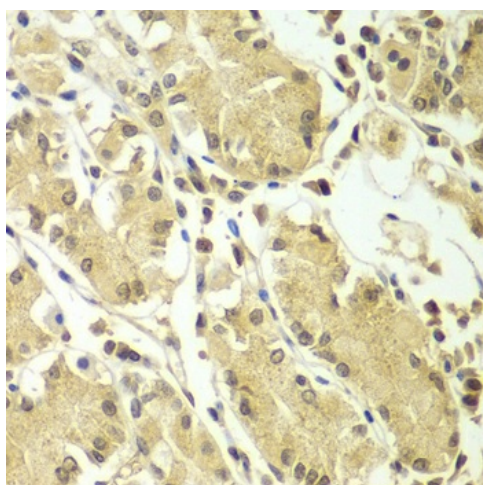
[View online »](#)

Synonyms: DKFZp686O1527; FLJ20128; GAOB1; MAAB; MGC4973

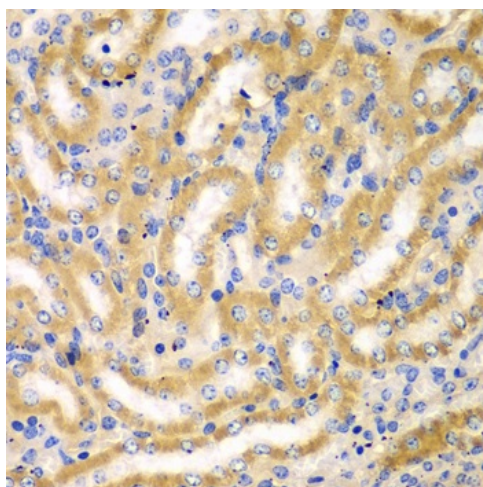
Product images:



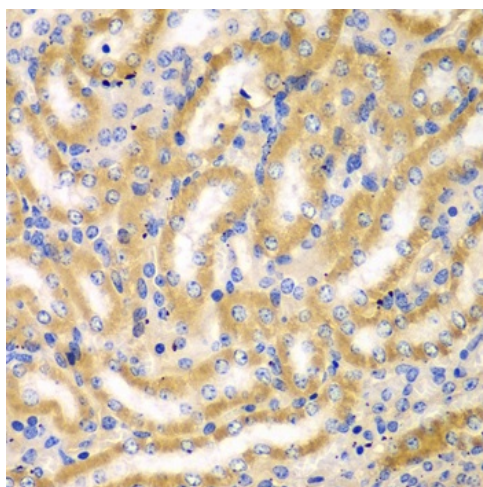
Western blot analysis of various lysates using BCAS3 Rabbit pAb ([TA373957]) at 1:1000 dilution. Secondary antibody: HRP-conjugated Goat anti-Rabbit IgG (H+L) (AS014) at 1:10000 dilution. Lysates/proteins: 25µg per lane. Blocking buffer: 3% nonfat dry milk in TBST. Detection: ECL Basic Kit (RM00020). Exposure time: 90s.



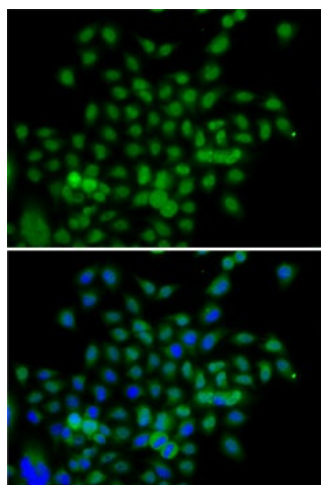
Immunohistochemistry analysis of paraffin-embedded Human kidney cancer using BCAS3 Rabbit pAb ([TA373957]) at dilution of 1:100 (40x lens). Microwave antigen retrieval performed with 0.01M PBS Buffer (pH 7.2) prior to IHC staining.



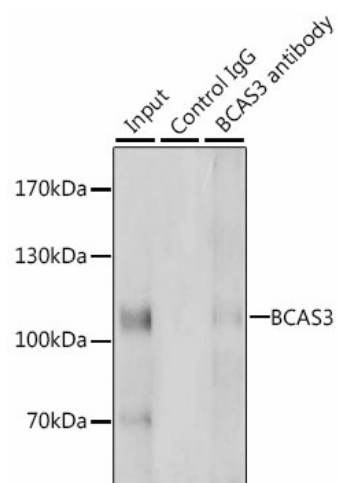
Immunohistochemistry analysis of paraffin-embedded Human stomach using BCAS3 Rabbit pAb ([TA373957]) at dilution of 1:100 (40x lens). Microwave antigen retrieval performed with 0.01M PBS Buffer (pH 7.2) prior to IHC staining.



Immunohistochemistry analysis of paraffin-embedded Mouse kidney using BCAS3 Rabbit pAb ([TA373957]) at dilution of 1:100 (40x lens). Microwave antigen retrieval performed with 0.01M PBS Buffer (pH 7.2) prior to IHC staining.



Immunofluorescence analysis of A-549 cells using BCAS3 Rabbit pAb ([TA373957]). Secondary antibody: Cy3-conjugated Goat anti-Rabbit IgG (H+L) (AS007) at 1:500 dilution. Blue: DAPI for nuclear staining.



Immunoprecipitation analysis of 200 µg extracts of HeLa cells